

## SPTC3 Rabbit pAb

CatalogNo: YN4120

### | Key Features

#### Host Species

- Rabbit

#### Reactivity

- Human, Mouse

#### Applications

- WB

#### MW

- 61kD (Calculated)

#### Isotype

- IgG

### | Recommended Dilution Ratios

WB 1:500-2000

### | Storage

**Storage\*** -15°C to -25°C/1 year (Do not lower than -25°C)

**Formulation** Liquid in PBS containing 50% glycerol, 0.5% BSA and 0.02% sodium azide.

### | Basic Information

**Clonality** Polyclonal

### | Immunogen Information

**Immunogen** Synthesized peptide derived from human SPTC3 AA range: 341-391

**Specificity** This antibody detects endogenous levels of SPTC3 at Human/Mouse

### | Target Information

**Gene name** SPTLC3 C20orf38 SPTLC2L

**Protein Name** SPTC3

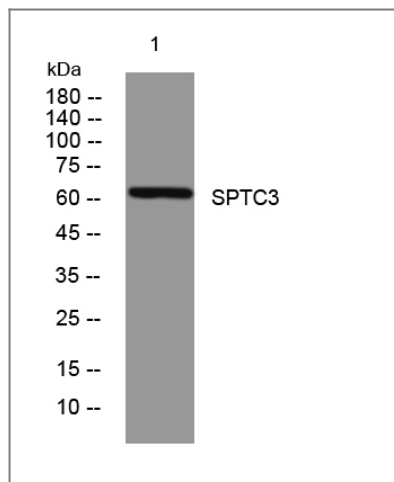
Organism	Gene ID	UniProt ID
Human	<a href="#">55304</a> ;	<a href="#">Q9NUV7</a> ;
Mouse	<a href="#">228677</a> ;	<a href="#">Q8BG54</a> ;

**Cellular Localization** Endoplasmic reticulum membrane ; Single-pass membrane protein .

**Tissue specificity** Expressed in most tissues, except peripheral blood cells and bone marrow, with highest levels in heart, kidney, liver, uterus and skin.

**Function** Catalytic activity:Palmitoyl-CoA + L-serine = CoA + 3-dehydro-D-sphinganine + CO(2).,cofactor:Pyridoxal phosphate.,pathway:Lipid metabolism; sphingolipid metabolism.,sequence Caution:Contaminating sequence. Potential poly-A sequence.,similarity:Belongs to the class-II pyridoxal-phosphate-dependent aminotransferase family.,subunit:SPTLC1, SPTLC2 and SPTLC3 may encode subunits of the enzyme.,tissue specificity:Expressed in most tissues, except peripheral blood cells and bone marrow, with highest levels in heart, kidney, liver, uterus and skin.,

## Validation Data



Western blot analysis of lysates from 293T cells, primary antibody was diluted at 1:1000, 4° over night

## Contact information

Orders: [order@immunoway.com](mailto:order@immunoway.com)  
Support: [tech@immunoway.com](mailto:tech@immunoway.com)  
Telephone: 877-594-3616 (Toll Free), 408-747-0185  
Website: <http://www.immunoway.com>  
Address: 2200 Ringwood Ave San Jose, CA 95131 USA



Please scan the QR code to access additional product information:  
**SPTC3 Rabbit pAb**

