

AT2B4 Rabbit pAb

CatalogNo: YN3898

Key Features

Host Species

- Rabbit

Reactivity

- Human,Rat

Applications

- WB

MW

- 137kD (Calculated)

Isotype

- IgG

Recommended Dilution Ratios

WB 1:500-2000

Storage

Storage*

-15°C to -25°C/1 year(Do not lower than -25°C)

Formulation

Liquid in PBS containing 50% glycerol, 0.5% BSA and 0.02% sodium azide.

Basic Information

Clonality

Polyclonal

Immunogen Information

Immunogen

Synthesized peptide derived from human AT2B4 AA range: 168-218

Specificity

This antibody detects endogenous levels of AT2B4 at Human/Rat

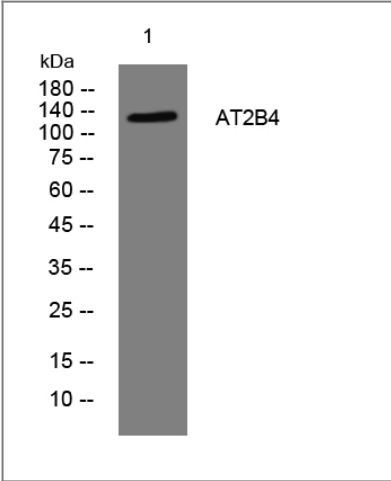
Target Information

Gene name

ATP2B4 ATP2B2 MXRA1

Protein Name	AT2B4		
	Organism	Gene ID	UniProt ID
	Human	493;	P23634;
	Rat	29600;	Q64542;
Cellular Localization	Cell membrane ; Multi-pass membrane protein . Cell projection, cilium, flagellum membrane ; Multi-pass membrane protein .		
Tissue specificity	Isoform XB is the most abundant isoform and is expressed ubiquitously. Isoforms containing segment Z have only been detected in heart, while isoforms containing segment a have been found in heart, stomach and brain cortex.		
Function	<p>Alternative products:There is a combination of two alternatively spliced domains at N-terminal site A (X and Z) and at C-terminal site B/C (A, B, D and K). The splice sites have mostly been studied independently. Full isoforms so far detected are isoform XA and isoform XB. Experimental confirmation may be lacking for some isoforms,Catalytic activity:ATP + H(2)O + Ca(2+)(Cis) = ADP + phosphate + Ca(2+)(Trans).,Function:This magnesium-dependent enzyme catalyzes the hydrolysis of ATP coupled with the transport of calcium out of the cell.,similarity:Belongs to the cation transport ATPase (P-type) family.,similarity:Belongs to the cation transport ATPase (P-type) family. Type IIB subfamily.,tissue specificity:Isoform XB is the most abundant isoform and is expressed ubiquitously. Isoforms containing segment Z have only been detected in heart, while isoforms containing segment a have been found in heart, stomach and brain cortex.,</p>		

Validation Data



Western blot analysis of lysates from 3T3 cells, primary antibody was diluted at 1:1000, 4°over night

Contact information

Orders: order@immunoway.com
Support: tech@immunoway.com
Telephone: 877-594-3616 (Toll Free), 408-747-0185
Website: http://www.immunoway.com
Address: 2200 Ringwood Ave San Jose, CA 95131 USA



Please scan the QR code
to access additional
product information:
AT2B4 Rabbit pAb

For Research Use Only. Not for Use in Diagnostic Procedures.

[Antibody](#) | [ELISA Kits](#) | [Protein](#) | [Reagents](#)