

## B3GL1 Rabbit pAb

CatalogNo: YN3854

### Key Features

#### Host Species

- Rabbit

#### Reactivity

- Human, Mouse, Rat

#### Applications

- WB

#### MW

- 36kD (Calculated)

#### Isotype

- IgG

### Storage

**Storage\*** -15°C to -25°C/1 year (Do not lower than -25°C)

**Formulation** Liquid in PBS containing 50% glycerol, 0.5% BSA and 0.02% sodium azide.

### Recommended Dilution Ratios

**WB 1:500-2000**

### Basic Information

**Clonality** Polyclonal

### Immunogen Information

**Immunogen** Synthesized peptide derived from human B3GL1 AA range: 24-74

**Specificity** This antibody detects endogenous levels of B3GL1 at Human/Mouse/Rat

### Target Information

**Gene name** B3GALNT1 B3GALT3 UNQ531/PRO1074

**Protein Name** B3GL1

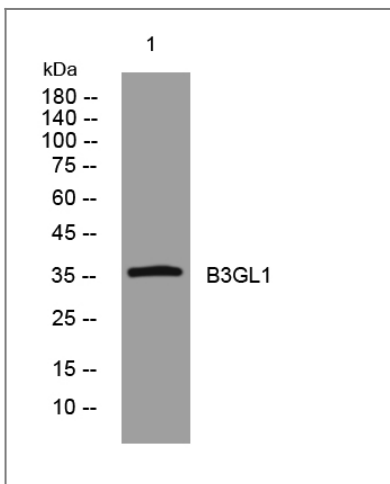
Organism	Gene ID	UniProt ID
Human	<a href="#">8706</a> ;	<a href="#">Q75752</a> ;
Mouse	<a href="#">26879</a> ;	<a href="#">Q920V1</a> ;
Rat	<a href="#">310508</a> ;	<a href="#">Q6AY39</a> ;

**Cellular Localization** Golgi apparatus membrane; Single-pass type II membrane protein.

**Tissue specificity** Higher expression in heart and brain, and to a lesser extent in lung, placenta, kidney and testis. Lower expression in liver, spleen and stomach. No expression in skeletal muscle.

**Function** Catalytic activity:UDP-N-acetyl-D-galactosamine + alpha-D-galactosyl-(1->4)-beta-D-galactosyl-(1->4)-beta-D-glucosyl-(1-<->1)-ceramide = UDP + N-acetyl-beta-D-galactosaminyl-(1->3)-alpha-D-galactosyl-(1->4)-beta-D-galactosyl-(1->4)-beta-D-glucosyl-(1-<->1)-ceramide.,cofactor:Magnesium.,Function:Transfers N-acetyl-galactosamine onto globotriaosylceramide.,online information:Beta-1,3-galactosyltransferase 3,online information:Blood group antigen gene mutation database,online information:GlycoGene database,pathway:Protein modification; protein glycosylation.,polymorphism:Different combinations or absence of the P blood group system antigens define 5 different phenotypes: P1, P2, P1(k), P2(k), and P. Genetic variation in B3GALT3 determines the P1(k) and P2(k) phenotype, which is rare and lack the capability to synthesize P antigen identified as globoside.,similarity:Belongs to the glycosyltransferase 31 family.,tissue specificity:Higher expression in heart and brain, and to a lesser extent in lung, placenta, kidney and testis. Lower expression in liver, spleen and stomach. No expression in skeletal muscle.,

## Validation Data



Western blot analysis of lysates from HeLa cells, primary antibody was diluted at 1:1000, 4° over night

## Contact information

Orders: [order@immunoway.com](mailto:order@immunoway.com)  
Support: [tech@immunoway.com](mailto:tech@immunoway.com)  
Telephone: 877-594-3616 (Toll Free), 408-747-0185  
Website: <http://www.immunoway.com>  
Address: 2200 Ringwood Ave San Jose, CA 95131 USA



Please scan the QR code to access additional product information:  
**B3GL1 Rabbit pAb**

For Research Use Only. Not for Use in Diagnostic Procedures.

[Antibody](#) | [ELISA Kits](#) | [Protein](#) | [Reagents](#)