

## GBG11 Rabbit pAb

CatalogNo: YN3696

### | Key Features

#### Host Species

- Rabbit

#### Reactivity

- Human, Mouse, Rat

#### Applications

- IHC, IF

#### MW

- 8kD (Calculated)

#### Isotype

- IgG

### | Recommended Dilution Ratios

IHC 1:50-200

IF 1:50-200

### | Storage

**Storage\*** -15°C to -25°C/1 year (Do not lower than -25°C)

**Formulation** Liquid in PBS containing 50% glycerol, 0.5% BSA and 0.02% sodium azide.

### | Basic Information

**Clonality** Polyclonal

### | Immunogen Information

**Immunogen** Synthesized peptide derived from human GBG11 AA range: 1-50

**Specificity** This antibody detects endogenous levels of GBG11 at Human/Mouse/Rat

### | Target Information

**Gene name** GNG11 GNGT11

**Protein Name** GBG11

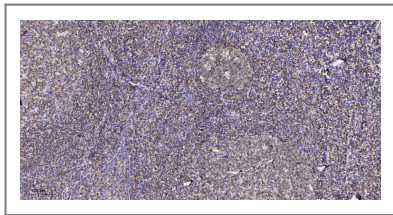
Organism	Gene ID	UniProt ID
Human	<a href="#">2791;</a>	<a href="#">P61952;</a>
Mouse	<a href="#">66066;</a>	<a href="#">P61953;</a>
Rat	<a href="#">100912034;</a>	<a href="#">P61954;</a>

**Cellular Localization** Cell membrane ; Lipid-anchor ; Cytoplasmic side .

**Tissue specificity** Abundantly expressed in all tissues tested except for brain.

**Function** Function:Guanine nucleotide-binding proteins (G proteins) are involved as a modulator or transducer in various transmembrane signaling systems. The beta and gamma chains are required for the GTPase activity, for replacement of GDP by GTP, and for G protein-effector interaction.,similarity:Belongs to the G protein gamma family.,subunit:G proteins are composed of 3 units, alpha, beta and gamma. Interacts with beta-1 and beta-3, but not with beta-2.,tissue specificity:Abundantly expressed in all tissues tested except for brain.,

## | Validation Data



Immunohistochemical analysis of paraffin-embedded human tonsil. 1, Antibody was diluted at 1:200(4° overnight). 2, Tris-EDTA,pH9.0 was used for antigen retrieval. 3,Secondary antibody was diluted at 1:200(room temperature, 45min).

## | Contact information

Orders: [order@immunoway.com](mailto:order@immunoway.com)  
Support: [tech@immunoway.com](mailto:tech@immunoway.com)  
Telephone: 877-594-3616 (Toll Free), 408-747-0185  
Website: <http://www.immunoway.com>  
Address: 2200 Ringwood Ave San Jose, CA 95131 USA



Please scan the QR code to access additional product information:  
**GBG11 Rabbit pAb**

For Research Use Only. Not for Use in Diagnostic Procedures.

[Antibody](#) | [ELISA Kits](#) | [Protein](#) | [Reagents](#)