

ZNT5 Rabbit pAb

CatalogNo: YN3353

Key Features

Host Species

- Rabbit

Reactivity

- Human, Mouse

Applications

- WB

MW

- 85kD (Observed)

Isotype

- IgG

Storage

Storage* -15°C to -25°C/1 year (Do not lower than -25°C)

Formulation Liquid in PBS containing 50% glycerol, 0.5% BSA and 0.02% sodium azide.

Recommended Dilution Ratios

WB 1:500-2000

Basic Information

Clonality Polyclonal

Immunogen Information

Immunogen Synthesized peptide derived from human ZNT5 AA range: 106-156

Specificity This antibody detects endogenous levels of ZNT5 at Human/Mouse

Target Information

Gene name SLC30A5 ZNT5 ZNTL1 ZTL1 UNQ863/PRO1879

Protein Name ZNT5

Organism	Gene ID	UniProt ID
Human	64924;	Q8TAD4;
Mouse	69048;	Q8R4H9;

Cellular Localization

Golgi apparatus, trans-Golgi network membrane ; Multi-pass membrane protein . Perimeter of granules, localizes to the brush border membrane of the enterocyte. Concentrated in early compartments of the secretory pathway such as COPII-coated vesicles.

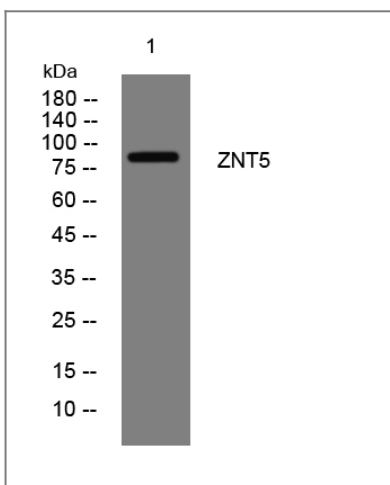
Tissue specificity

Ubiquitously expressed. Highly expressed in pancreas, liver and kidney. Expressed abundantly in insulin-containing beta cells, undetectable in other endocrine cell types including glucagon-secreting alpha cells and most acinar cells.

Function

Function:Functions as a zinc transporter. May be a transporter of zinc into beta cells in order to form insulin crystals. Partly regulates cellular zinc homeostasis. Required with ZNT7 for the activation of zinc-requiring enzymes, alkaline phosphatases (ALPs). Transports zinc into the lumens of the Golgi apparatus and vesicular compartments where ALPs locate, thus, converting apoALPs to holoALPs. Required with ZNT6 and ZNT7 for the activation of TNAP.,induction:Increased intracellular zinc level, resulting from extracellular zinc supplementation, do not induce any up- or down-regulation of gene expression. Up-regulated by zinc depletion.,miscellaneous:The histidine-rich loop is essential for ZNT5 and ZNT6 heterooligomeric complexes to activate TNAP.,similarity:Belongs to the cation diffusion facilitator (CDF) transporter (TC 2.A.4) family. SLC30A subfamily.,subcellular location:Perimeter of granules, localizes to the brush border membrane of the enterocyte. Concentrated in early compartments of the secretory pathway such as COPII-coated vesicles.,subunit:Heterooligomer. Interacts with ZNT6.,tissue specificity:Ubiquitously expressed. Highly expressed in pancreas, liver and kidney. Expressed abundantly in insulin-containing beta cells, undetectable in other endocrine cell types including glucagon-secreting alpha cells and most acinar cells.,

Validation Data



Western blot analysis of lysates from HpeG2 cells, primary antibody was diluted at 1:1000, 4°C over night

Contact information

Orders: order@immunoway.com
Support: tech@immunoway.com
Telephone: 877-594-3616 (Toll Free), 408-747-0185
Website: http://www.immunoway.com
Address: 2200 Ringwood Ave San Jose, CA 95131 USA



Please scan the QR code
to access additional
product information:
ZNT5 Rabbit pAb

For Research Use Only. Not for Use in Diagnostic Procedures.

[Antibody](#) | [ELISA Kits](#) | [Protein](#) | [Reagents](#)