

## SKOR1 Rabbit pAb

CatalogNo: YN3314

### Key Features

#### Host Species

- Rabbit

#### Reactivity

- Human, Mouse, Rat

#### Applications

- WB

#### MW

- 105kD (Observed)

#### Isotype

- IgG

### Storage

**Storage\*** -15°C to -25°C/1 year (Do not lower than -25°C)

**Formulation** Liquid in PBS containing 50% glycerol, 0.5% BSA and 0.02% sodium azide.

### Recommended Dilution Ratios

**WB 1:500-2000**

### Basic Information

**Clonality** Polyclonal

### Immunogen Information

**Immunogen** Synthesized peptide derived from human SKOR1 AA range: 322-372

**Specificity** This antibody detects endogenous levels of SKOR1 at Human/Mouse/Rat

### Target Information

**Gene name** SKOR1 CORL1 FUSSEL15 LBXCOR1

**Protein Name** SKOR1

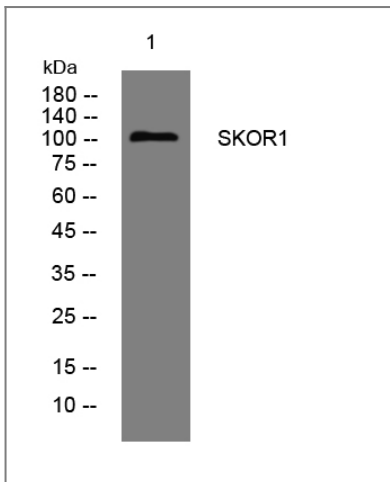
Organism	Gene ID	UniProt ID
Human	<a href="#">390598</a> ;	<a href="#">P84550</a> ;
Mouse	<a href="#">207667</a> ;	<a href="#">Q8BX46</a> ;
Rat	<a href="#">315748</a> ;	<a href="#">P84551</a> ;

**Cellular Localization** Nucleus .

**Tissue specificity** Present specifically in cerebellar Purkinje cells (at protein level).

**Function** Caution:The sequence shown here is derived from an Ensembl automatic analysis pipeline and should be considered as preliminary data.,Function:Acts as a transcriptional corepressor of LBX1 (By similarity). Inhibits BMP signaling.,similarity:Belongs to the SKI family.,subunit:Interacts with LBX1 (By similarity). Interacts with SMAD1, SMAD2 and SMAD3.,tissue specificity:Present specifically in cerebellar Purkinje cells (at protein level).,

## Validation Data



Western blot analysis of lysates from KB cells, primary antibody was diluted at 1:1000, 4° over night

## Contact information

Orders: [order@immunoway.com](mailto:order@immunoway.com)  
Support: [tech@immunoway.com](mailto:tech@immunoway.com)  
Telephone: 877-594-3616 (Toll Free), 408-747-0185  
Website: <http://www.immunoway.com>  
Address: 2200 Ringwood Ave San Jose, CA 95131 USA



Please scan the QR code to access additional product information:  
**SKOR1 Rabbit pAb**

