

XYLT1 Rabbit pAb

CatalogNo: YN3295

| Key Features

Host Species

- Rabbit

Reactivity

- Human, Mouse, Rat

Applications

- WB

MW

- 105kD (Observed)

Isotype

- IgG

| Recommended Dilution Ratios

WB 1:500-2000

| Storage

Storage* -15°C to -25°C/1 year (Do not lower than -25°C)

Formulation Liquid in PBS containing 50% glycerol, 0.5% BSA and 0.02% sodium azide.

| Basic Information

Clonality Polyclonal

| Immunogen Information

Immunogen Synthesized peptide derived from human XYLT1 AA range: 312-362

Specificity This antibody detects endogenous levels of XYLT1 at Human/Mouse/Rat

| Target Information

Gene name XYLT1 XT1

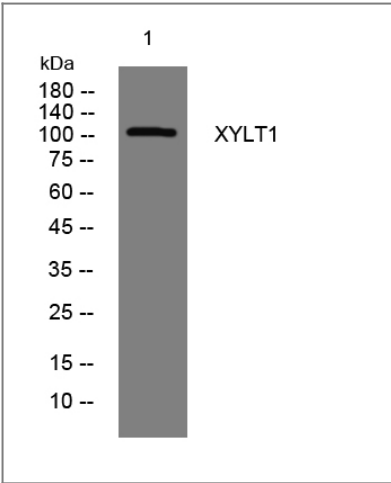
Protein Name	XYLT1		
	Organism	Gene ID	UniProt ID
	Human	64131 ;	Q86Y38 ;
	Mouse	233781 ;	Q811B1 ;
	Rat		Q9EPI1 ;

Cellular Localization Golgi apparatus membrane ; Single-pass type II membrane protein . Secreted . Detected predominantly in the Golgi apparatus. .

Tissue specificity Widely expressed. Expressed at higher level in placenta, kidney and pancreas. Weakly expressed in skeletal muscle.

Function Catalytic activity:Transfers a beta-D-xylosyl residue from UDP-D-xylose to the serine hydroxy group of an acceptor protein substrate.,cofactor:Divalent cations.,Function:Catalyzes the first step in biosynthesis of glycosaminoglycan. Transfers D-xylose from UDP-D-xylose to specific serine residues of the core protein. Initial enzyme in the biosynthesis of chondroitin sulfate and dermatan sulfate proteoglycans in fibroblasts and chondrocytes.,miscellaneous:Activity is strongly reduced in seminal plasma of unfertile men.,online information:GlycoGene database,pathway:Glycan metabolism; chondroitin sulfate biosynthesis.,pathway:Glycan metabolism; heparan sulfate biosynthesis.,PTM:Contains 7 disulfide bonds.,PTM:N-glycosylated.,similarity:Belongs to the glycosyltransferase 14 family. XylT subfamily.,subcellular location:Some fraction is also found in the extracellular space together with chondroitin sulfate proteoglycans, suggesting that it can be secreted.,subunit:Monomer.,tissue specificity:Widely expressed. Expressed at higher level in placenta, kidney and pancreas. Weakly expressed in skeletal muscle.,

Validation Data



Western blot analysis of lysates from SW480 cells, primary antibody was diluted at 1:1000, 4°over night

Contact information

Orders: order@immunoway.com
Support: tech@immunoway.com
Telephone: 877-594-3616 (Toll Free), 408-747-0185
Website: http://www.immunoway.com
Address: 2200 Ringwood Ave San Jose, CA 95131 USA



Please scan the QR code
to access additional
product information:
XYLT1 Rabbit pAb

For Research Use Only. Not for Use in Diagnostic Procedures.

[Antibody](#) | [ELISA Kits](#) | [Protein](#) | [Reagents](#)