

DSE Rabbit pAb

CatalogNo: YN3291

| Key Features

Host Species

- Rabbit

Reactivity

- Human, Mouse

Applications

- WB

MW

- 105kD (Observed)

Isotype

- IgG

| Recommended Dilution Ratios

WB 1:500-2000

| Storage

Storage* -15°C to -25°C/1 year (Do not lower than -25°C)

Formulation Liquid in PBS containing 50% glycerol, 0.5% BSA and 0.02% sodium azide.

| Basic Information

Clonality Polyclonal

| Immunogen Information

Immunogen Synthesized peptide derived from human DSE AA range: 164-214

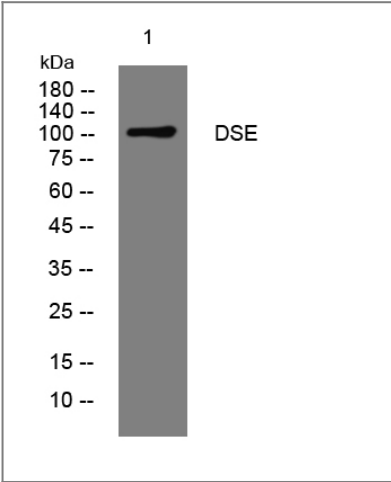
Specificity This antibody detects endogenous levels of DSE at Human/Mouse

| Target Information

Gene name DSE SART2

Protein Name	DSE		
	Organism	Gene ID	UniProt ID
	Human	29940;	Q9UL01;
	Mouse	212898;	Q8BLI4;
Cellular Localization	Endoplasmic reticulum membrane ; Multi-pass membrane protein . Golgi apparatus membrane ; Multi-pass membrane protein . Cytoplasmic vesicle membrane ; Multi-pass membrane protein . Microsome membrane ; Multi-pass membrane protein .		
Tissue specificity	Ubiquitously expressed with higher expression in kidney and ovary and lower expression in brain, colon and thymus. Also expressed in renal cell carcinomas, brain tumors, and in a part of melanomas and adenocarcinomas from organs other than the breast. Expressed in squamous cell carcinomas (SCC), glioma, and some adenocarcinoma cell lines, but not in breast cancer cell lines or any normal tissues (at protein level).		
Function	Catalytic activity:Chondroitin D-glucuronate = dermatan L-iduronate.,Function:Converts D-glucuronic acid to L-iduronic acid (IdoUA) residues.,pathway:Glycan metabolism; chondroitin sulfate biosynthesis.,pathway:Glycan metabolism; heparan sulfate biosynthesis.,similarity:Belongs to the dermatan-sulfate isomerase family.,tissue specificity:Ubiquitously expressed with higher expression in kidney and ovary and lower expression in brain, colon and thymus. Also expressed in renal cell carcinomas, brain tumors, and in a part of melanomas and adenocarcinomas from organs other than the breast. Expressed in squamous cell carcinomas (SCC), glioma, and some adenocarcinoma cell lines, but not in breast cancer cell lines or any normal tissues (at protein level).		

| Validation Data



Western blot analysis of lysates from 293T cells, primary antibody was diluted at 1:1000, 4°over night

| Contact information

Orders: order@immunoway.com
Support: tech@immunoway.com
Telephone: 877-594-3616 (Toll Free), 408-747-0185
Website: <http://www.immunoway.com>
Address: 2200 Ringwood Ave San Jose, CA 95131 USA



Please scan the QR code
to access additional
product information:
DSE Rabbit pAb

For Research Use Only. Not for Use in Diagnostic Procedures.

[Antibody](#) | [ELISA Kits](#) | [Protein](#) | [Reagents](#)