

NOD1 Rabbit pAb

CatalogNo: YN3266

Key Features

Host Species

- Rabbit

Reactivity

- Human, Mouse

Applications

- WB

MW

- 105kD (Observed)

Isotype

- IgG

Recommended Dilution Ratios

WB 1:500-2000

Storage

Storage*

-15°C to -25°C/1 year (Do not lower than -25°C)

Formulation

Liquid in PBS containing 50% glycerol, 0.5% BSA and 0.02% sodium azide.

Basic Information

Clonality

Polyclonal

Immunogen Information

Immunogen

Synthesized peptide derived from human NOD1 AA range: 290-340

Specificity

This antibody detects endogenous levels of NOD1 at Human/Mouse

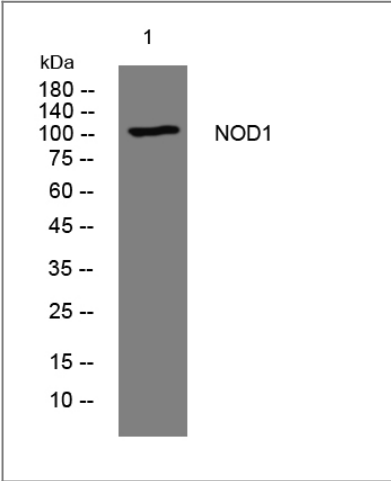
Target Information

Gene name

NOD1 CARD4

Protein Name	NOD1		
	Organism	Gene ID	UniProt ID
	Human	10392;	Q9Y239;
	Mouse	107607;	Q8BHB0;
Cellular Localization	Cytoplasm. Cell membrane . Apical cell membrane. Basolateral cell membrane. Detected in the cytoplasm and at the cell membrane. Following bacterial infection, localizes to bacterial entry sites in the cell membrane. Recruited to the basolateral and apical membranes in polarized epithelial cells.		
Tissue specificity	Highly expressed in adult heart, skeletal muscle, pancreas, spleen and ovary. Also detected in placenta, lung, liver, kidney, thymus, testis, small intestine and colon.		
Function	Function:Enhances caspase-9-mediated apoptosis. Induces NF-kappa-B activity via RIPK2 and IKK-gamma. Confers responsiveness to intracellular bacterial lipopolysaccharides (LPS).,similarity:Contains 1 CARD domain.,similarity:Contains 1 NACHT domain.,similarity:Contains 9 LRR (leucine-rich) repeats.,subunit:Self-associates. Binds to caspase-9 and RIPK2 by CARD-CARD interaction.,tissue specificity:Highly expressed in adult heart, skeletal muscle, pancreas, spleen and ovary. Also detected in placenta, lung, liver, kidney, thymus, testis, small intestine and colon.,		

Validation Data



Western blot analysis of lysates from THP-1 cells, primary antibody was diluted at 1:1000, 4°over night

Contact information

Orders: order@immunoway.com
Support: tech@immunoway.com
Telephone: 877-594-3616 (Toll Free), 408-747-0185
Website: http://www.immunoway.com
Address: 2200 Ringwood Ave San Jose, CA 95131 USA



Please scan the QR code to access additional product information:
NOD1 Rabbit pAb

