

CA101 Rabbit pAb

CatalogNo: YN3259

Key Features

Host Species

- Rabbit

Reactivity

- Human, Mouse

Applications

- WB

MW

- 105kD (Observed)

Isotype

- IgG

Storage

Storage* -15°C to -25°C/1 year (Do not lower than -25°C)

Formulation Liquid in PBS containing 50% glycerol, 0.5% BSA and 0.02% sodium azide.

Recommended Dilution Ratios

WB 1:500-2000

Basic Information

Clonality Polyclonal

Immunogen Information

Immunogen Synthesized peptide derived from human CA101 AA range: 450-500

Specificity This antibody detects endogenous levels of CA101 at Human

Target Information

Gene name C1orf101

Protein Name CA101

Organism

Human

Gene ID

[257044;](#)

UniProt ID

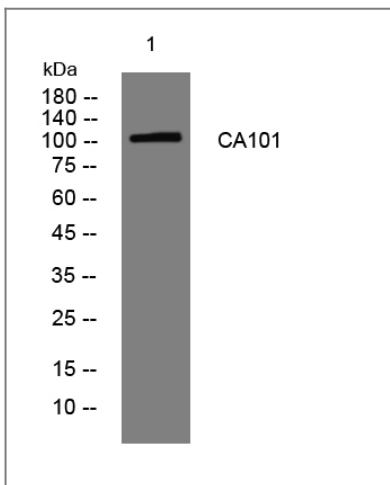
[Q5SY80;](#)

Cellular Localization

Cell projection, cilium, flagellum membrane ; Single-pass type I membrane protein . Specifically located in the principal piece of sperm tail. .

Tissue specificity Testis,

Validation Data



Western blot analysis of lysates from MCF-7 cells, primary antibody was diluted at 1:1000, 4°over night

Contact information

Orders: order@immunoway.com
Support: tech@immunoway.com
Telephone: 877-594-3616 (Toll Free), 408-747-0185
Website: <http://www.immunoway.com>
Address: 2200 Ringwood Ave San Jose, CA 95131 USA



Please scan the QR code to access additional product information:
CA101 Rabbit pAb

For Research Use Only. Not for Use in Diagnostic Procedures.

[Antibody](#) | [ELISA Kits](#) | [Protein](#) | [Reagents](#)