

## PTN5 Rabbit pAb

CatalogNo: YN3169

### Key Features

#### Host Species

- Rabbit

#### Reactivity

- Human, Mouse, Rat

#### Applications

- WB

#### MW

- 60kD (Observed)

#### Isotype

- IgG

### Recommended Dilution Ratios

WB 1:500-2000

### Storage

**Storage\*** -15°C to -25°C/1 year (Do not lower than -25°C)

**Formulation** Liquid in PBS containing 50% glycerol, 0.5% BSA and 0.02% sodium azide.

### Basic Information

**Clonality** Polyclonal

### Immunogen Information

**Immunogen** Synthesized peptide derived from human PTN5 AA range: 8-58

**Specificity** This antibody detects endogenous levels of PTN5 at Human/Mouse/Rat

### Target Information

**Gene name** PTPN5

**Protein Name** PTN5

Organism	Gene ID	UniProt ID
Human	<a href="#">84867</a> ;	<a href="#">P54829</a> ;
Mouse	<a href="#">19259</a> ;	<a href="#">P54830</a> ;
Rat	<a href="#">29644</a> ;	<a href="#">P35234</a> ;

**Cellular Localization**

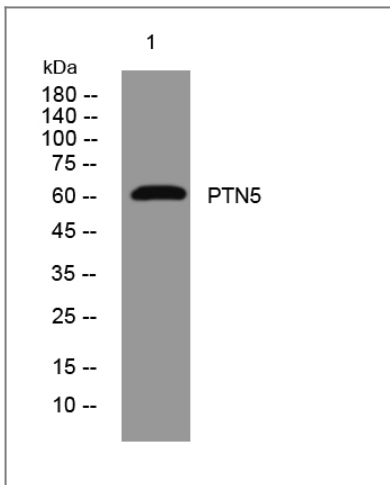
Endoplasmic reticulum membrane ; Multi-pass membrane protein .

**Tissue specificity** Amygdala,Brain,Hippocampus,

**Function**

Catalytic activity:Protein tyrosine phosphate + H(2)O = protein tyrosine + phosphate.,Caution:It is uncertain whether Met-1 or Met-25 is the initiator.,similarity:Belongs to the protein-tyrosine phosphatase family. Non-receptor class subfamily.,similarity:Contains 1 tyrosine-protein phosphatase domain.,

## Validation Data



Western blot analysis of lysates from U2OS cells, primary antibody was diluted at 1:1000, 4° over night

## Contact information

Orders: [order@immunoway.com](mailto:order@immunoway.com)  
Support: [tech@immunoway.com](mailto:tech@immunoway.com)  
Telephone: 877-594-3616 (Toll Free), 408-747-0185  
Website: <http://www.immunoway.com>  
Address: 2200 Ringwood Ave San Jose, CA 95131 USA



Please scan the QR code to access additional product information:  
**PTN5 Rabbit pAb**

