

DEAF1 Rabbit pAb

CatalogNo: YN3167

Key Features

Host Species

- Rabbit

Reactivity

- Human, Mouse, Rat

Applications

- WB

MW

- 60kD (Observed)

Isotype

- IgG

Storage

Storage* -15°C to -25°C/1 year (Do not lower than -25°C)

Formulation Liquid in PBS containing 50% glycerol, 0.5% BSA and 0.02% sodium azide.

Recommended Dilution Ratios

WB 1:500-2000

Basic Information

Clonality Polyclonal

Immunogen Information

Immunogen Synthesized peptide derived from human DEAF1 AA range: 515-565

Specificity This antibody detects endogenous levels of DEAF1 at Human/Mouse/Rat

Target Information

Gene name DEAF1 SPN ZMYND5

Protein Name

DEAF1

Organism**Gene ID****UniProt ID**

Human

[10522;](#)[O75398;](#)

Mouse

[54006;](#)[Q9Z1T5;](#)

Rat

[83632;](#)[O88450;](#)**Cellular Localization**

[Isoform 1]: Nucleus. Cytoplasm. Cytoplasmic in non-mucinous colorectal carcinoma. When expressed alone, localized almost exclusively in the nucleus but, when expressed with isoform 4, nuclear expression decreases to 32% and cytoplasmic expression increases by 270%.; [Isoform 2]: Secreted. Secreted in some cell types.; [Isoform 3]: Secreted. Secreted in some cell types.; [Isoform 4]: Cytoplasm. Nucleus. When expressed alone, localizes mainly in the cytoplasm but, when expressed with isoform 1, nuclear localization is enhanced.

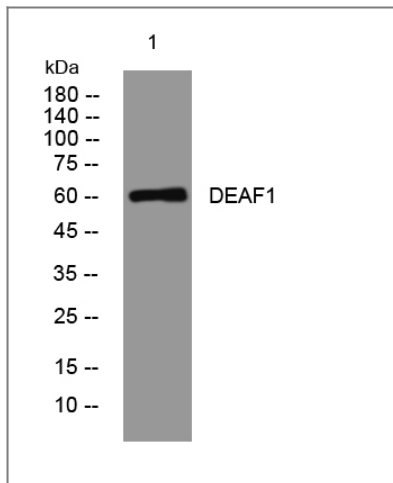
Tissue specificity

Expressed in various tissues and cells such as in peripheral mononuclear cells and hormone-secreting pituitary cells. Expression in pancreatic lymph nodes of patients with type 1 diabetes is 20 times higher than in healthy controls. Highly expressed in fetal and adult brain.

Function

Alternative products:Experimental confirmation may be lacking for some isoforms,Caution:This protein was first known as suppressin (characterized in bovine neuroendocrine and immune cells). However, according to PubMed:9773984, it is uncertain whether it corresponds really to the suppressin also described in Ref.3. DEAF1 has been described as a nuclear dimeric protein and suppressin as a secreted monomeric protein.,Disease:Defects in DEAF1 could confer a growth advantage to the mutated cell that may have implications for the development and progression of neoplasia, e.g. in the case of colorectal adenocarcinomas (CRC).,Function:Transcription factor that binds to sequence with multiple copies of TTC[CG]G present in its own promoter and that of the HNRPA2B1 gene. Down-regulates transcription of these genes. Binds to the retinoic acid response element (RARE) AGGGTTCACCGAAAGTTCA. Activates the proenkephalin gene independently of promoter binding, probably through protein-protein interaction. When secreted, behaves as an inhibitor of cell proliferation, by arresting cells in the G0 or G1 phase.,miscellaneous:Subcellular location in CRC (cytoplasmic or nuclear) is a prognostic factor that identifies a subgroup of patients with reduced survival. In addition, changes in the subcellular location correlates with the proliferative status of the cells.,similarity:Contains 1 MYND-type zinc finger.,similarity:Contains 1 SAND domain.,subcellular location:Secreted in some cell types.,subunit:Homodimer (Probable). Binds to LMO4 (via its C-terminus), LMO2 and CLIM2 (By similarity). May interact with the corepressor NCOR.,tissue specificity:Expressed in various tissues and cells such as in peripheral mononuclear cells and hormone-secreting pituitary cells.,

Validation Data



Western blot analysis of lysates from HCT116 cells, primary antibody was diluted at 1:1000, 4°over night

Contact information

Orders: order@immunoway.com
Support: tech@immunoway.com
Telephone: 877-594-3616 (Toll Free), 408-747-0185
Website: <http://www.immunoway.com>
Address: 2200 Ringwood Ave San Jose, CA 95131 USA



Please scan the QR code to access additional product information:
DEAF1 Rabbit pAb

For Research Use Only. Not for Use in Diagnostic Procedures.

[Antibody](#) | [ELISA Kits](#) | [Protein](#) | [Reagents](#)