

VGLU1 Rabbit pAb

CatalogNo: YN3121

| Key Features

Host Species

- Rabbit

Reactivity

- Human, Mouse, Rat

Applications

- WB

MW

- 60kD (Observed)

Isotype

- IgG

| Recommended Dilution Ratios

WB 1:500-2000

| Storage

Storage*

-15°C to -25°C/1 year (Do not lower than -25°C)

Formulation

Liquid in PBS containing 50% glycerol, 0.5% BSA and 0.02% sodium azide.

| Basic Information

Clonality

Polyclonal

| Immunogen Information

Immunogen

Synthesized peptide derived from human VGLU1 AA range: 488-538

Specificity

This antibody detects endogenous levels of VGLU1 at Human/Mouse/Rat

| Target Information

Gene name

SLC17A7 BNPI VGLUT1

Protein Name VGLU1

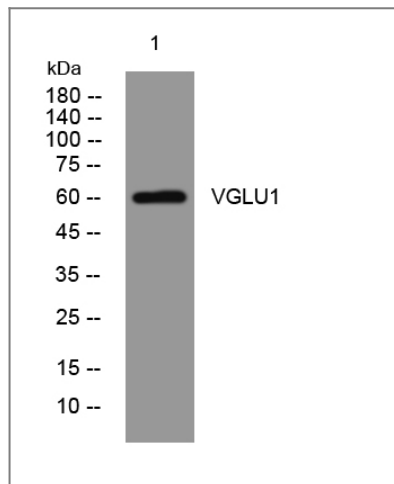
Organism	Gene ID	UniProt ID
Human	57030;	Q9P2U7;
Mouse	72961;	Q3TXX4;
Rat	116638;	Q62634;

Cellular Localization Cytoplasmic vesicle, secretory vesicle, synaptic vesicle membrane . Membrane ; Multi-pass membrane protein . Cell junction, synapse, synaptosome .

Tissue specificity Expressed in several regions of the brain including amygdala, cerebellum, cerebral cortex, hippocampus, frontal lobe, medulla, occipital lobe, putamen and temporal lobe.

Function Function:Mediates the uptake of glutamate into synaptic vesicles at presynaptic nerve terminals of excitatory neural cells. May also mediate the transport of inorganic phosphate.,similarity:Belongs to the major facilitator superfamily. Sodium/anion cotransporter family. VGLUT subfamily.,tissue specificity:Expressed in several regions of the brain including amygdala, cerebellum, cerebral cortex, hippocampus, frontal lobe, medulla, occipital lobe, putamen and temporal lobe.,

Validation Data



Western blot analysis of lysates from MCF-7 cells, primary antibody was diluted at 1:1000, 4° over night

Contact information

Orders: order@immunoway.com
Support: tech@immunoway.com
Telephone: 877-594-3616 (Toll Free), 408-747-0185
Website: <http://www.immunoway.com>
Address: 2200 Ringwood Ave San Jose, CA 95131 USA



Please scan the QR code to access additional product information:
VGLU1 Rabbit pAb

