

HLAG Rabbit pAb

CatalogNo: YN2896

Key Features

Host Species

- Rabbit

Reactivity

- Human

Applications

- WB,ELISA

MW

- 37kD (Observed)

Isotype

- IgG

Recommended Dilution Ratios

WB 1:500-2000**ELISA 1:5000-20000**

Storage

Storage* -15°C to -25°C/1 year(Do not lower than -25°C)**Formulation** Liquid in PBS containing 50% glycerol,0.5% BSA and 0.02% sodium azide.

Basic Information

Clonality Polyclonal

Immunogen Information

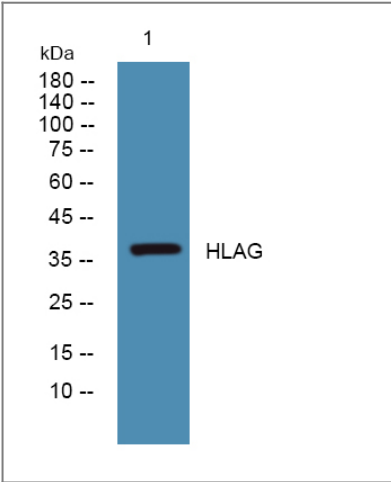
Immunogen Synthesized peptide derived from part region of human protein**Specificity** HLAG Polyclonal Antibody detects endogenous levels of protein.

Target Information

Gene name HLA-G HLA-6.0 HLAG

Protein Name	HLA class I histocompatibility antigen, alpha chain G (HLA G antigen) (MHC class I antigen G)		
	Organism	Gene ID	UniProt ID
	Human	3135 ;	P17693 ;
Cellular Localization	[Isoform 1]: Cell membrane ; Single-pass type I membrane protein . Endoplasmic reticulum membrane . Early endosome membrane .; [Soluble HLA class I histocompatibility antigen, alpha chain G]: Secreted .; [Isoform 2]: Cell membrane ; Single-pass type I membrane protein .; [Isoform 3]: Cell membrane ; Single-pass type I membrane protein .; [Isoform 4]: Cell membrane ; Single-pass type I membrane protein .; [Isoform 5]: Secreted . Early endosome .; [Isoform 6]: Secreted .; [Isoform 7]: Secreted .; Cell projection, filopodium membrane . HLA-G trogocytosis from extravillous trophoblast's filopodia occurs in the majority of decidual NK cells. .		
Tissue specificity	Expressed in adult eye (PubMed:1570318). Expressed in immune cell subsets including monocytes, myeloid and plasmacytoid dendritic cells and regulatory T cells (Tr1)(at protein level) (PubMed:20448110). Secreted by follicular dendritic cell and follicular helper T cells (PubMed:24453251). Isoform 5: Detected in physiological fluids including amniotic fluid and serum (PubMed:11137219). Isoform 7: Expressed in placenta, amniotic membrane, skin cord blood and peripheral blood mononuclear cells (PubMed:11137219).		
Function	Function:Involved in the presentation of foreign antigens to the immune system.,similarity:Belongs to the MHC class I family.,similarity:Contains 1 Ig-like C1-type (immunoglobulin-like) domain.,subunit:Heterodimer of an alpha chain and a beta chain (beta-2-microglobulin).,tissue specificity:Expression of HLAG seems to be restricted to eye cells and tissue.,		

Validation Data



Western blot analysis of lysates from A431 cells, primary antibody was diluted at 1:1000, 4°over night

Contact information

Orders: order@immunoway.com
Support: tech@immunoway.com
Telephone: 877-594-3616 (Toll Free), 408-747-0185
Website: <http://www.immunoway.com>
Address: 2200 Ringwood Ave San Jose, CA 95131 USA



Please scan the QR code
to access additional
product information:
HLAG Rabbit pAb

For Research Use Only. Not for Use in Diagnostic Procedures.

[Antibody](#) | [ELISA Kits](#) | [Protein](#) | [Reagents](#)