

## OR2J1 Rabbit pAb

CatalogNo: YN2753

### Key Features

#### Host Species

- Rabbit

#### Reactivity

- Human

#### Applications

- WB,ELISA

#### MW

- 34kD (Observed)

#### Isotype

- IgG

### Recommended Dilution Ratios

WB 1:500-2000

ELISA 1:5000-20000

### Storage

**Storage\*** -15°C to -25°C/1 year(Do not lower than -25°C)

**Formulation** Liquid in PBS containing 50% glycerol,0.5% BSA and 0.02% sodium azide.

### Basic Information

**Clonality** Polyclonal

### Immunogen Information

**Immunogen** Synthesized peptide derived from human protein . at AA range: 230-310

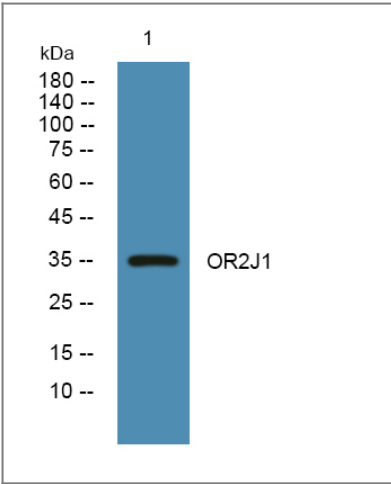
**Specificity** OR2J1 Polyclonal Antibody detects endogenous levels of protein.

### Target Information

**Gene name** OR2J1 OR2J1P

<b>Protein Name</b>	Olfactory receptor 2J1 (Hs6M1-4) (Olfactory receptor 6-5) (OR6-5)		
	<b>Organism</b>	<b>Gene ID</b>	<b>UniProt ID</b>
	Human		<a href="#">Q9GZK6</a> ;
<b>Cellular Localization</b>	Cell membrane; Multi-pass membrane protein.		
<b>Function</b>	Function:Odorant receptor .,polymorphism:A stop codon in the gene coding for this protein at position Gln-194 is responsible for functional diversity thus producing a pseudogene. The stop codon is more frequent in non-Africans than in African-Americans.,similarity:Belongs to the G-protein coupled receptor 1 family.,		

## | Validation Data



Western blot analysis of lysates from HCT116 cells, primary antibody was diluted at 1:1000, 4°over night

## | Contact information

Orders: [order@immunoway.com](mailto:order@immunoway.com)  
 Support: [tech@immunoway.com](mailto:tech@immunoway.com)  
 Telephone: 877-594-3616 (Toll Free), 408-747-0185  
 Website: <http://www.immunoway.com>  
 Address: 2200 Ringwood Ave San Jose, CA 95131 USA



Please scan the QR code  
 to access additional  
 product information:  
**OR2J1 Rabbit pAb**

For Research Use Only. Not for Use in Diagnostic Procedures.

[Antibody](#) | [ELISA Kits](#) | [Protein](#) | [Reagents](#)