

## OR2B6 Rabbit pAb

CatalogNo: YN2608

### Key Features

**Host Species**

- Rabbit

**Reactivity**

- Human, Mouse

**Applications**

- WB, ELISA

**MW**

- 34kD (Observed)

**Isotype**

- IgG

### Storage

**Storage\*** -15°C to -25°C/1 year (Do not lower than -25°C)**Formulation** Liquid in PBS containing 50% glycerol, 0.5% BSA and 0.02% sodium azide.

### Recommended Dilution Ratios

**WB 1:500-2000****ELISA 1:5000-20000**

### Basic Information

**Clonality** Polyclonal

### Immunogen Information

**Immunogen** Synthesized peptide derived from part region of human protein**Specificity** OR2B6 Polyclonal Antibody detects endogenous levels of protein.

### Target Information

**Gene name** OR2B6 OR2B1 OR2B1P OR2B5 OR2B6P

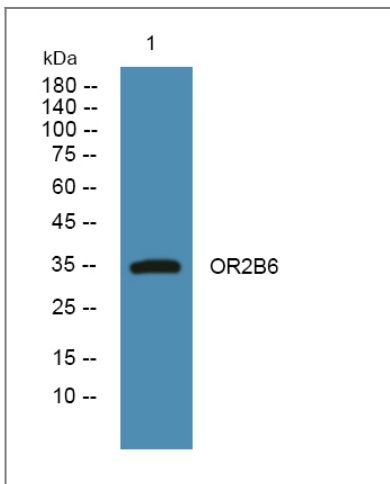
**Protein Name** Olfactory receptor 2B6 (Hs6M1-32) (Olfactory receptor 2B1) (Olfactory receptor 2B5) (Olfactory receptor 5-40) (OR5-40) (Olfactory receptor 6-31) (OR6-31) (Olfactory receptor OR6-4)

Organism	Gene ID	UniProt ID
Human	<a href="#">26212</a> ;	<a href="#">P58173</a> ;

**Cellular Localization** Cell membrane; Multi-pass membrane protein.

**Function** Function:Odorant receptor .,similarity:Belongs to the G-protein coupled receptor 1 family.,

## Validation Data



Western blot analysis of lysates from SW480 cells, primary antibody was diluted at 1:1000, 4°C over night

## Contact information

Orders: [order@immunoway.com](mailto:order@immunoway.com)  
Support: [tech@immunoway.com](mailto:tech@immunoway.com)  
Telephone: 877-594-3616 (Toll Free), 408-747-0185  
Website: <http://www.immunoway.com>  
Address: 2200 Ringwood Ave San Jose, CA 95131 USA



Please scan the QR code to access additional product information:  
**OR2B6 Rabbit pAb**

For Research Use Only. Not for Use in Diagnostic Procedures.

[Antibody](#) | [ELISA Kits](#) | [Protein](#) | [Reagents](#)