

OR1F1 Rabbit pAb

CatalogNo: YN2594

Key Features

Host Species

- Rabbit

Reactivity

- Human

Applications

- WB,ELISA

MW

- 34kD (Observed)

Isotype

- IgG

Storage

Storage* -15°C to -25°C/1 year(Do not lower than -25°C)**Formulation** Liquid in PBS containing 50% glycerol,0.5% BSA and 0.02% sodium azide.

Recommended Dilution Ratios

WB 1:500-2000**ELISA 1:5000-20000**

Basic Information

Clonality Polyclonal

Immunogen Information

Immunogen Synthesized peptide derived from part region of human protein**Specificity** OR1F1 Polyclonal Antibody detects endogenous levels of protein.

Target Information

Gene name OR1F1 OLFMF OR1F10 OR1F4 OR1F5 OR1F6 OR1F7 OR1F8 OR1F9

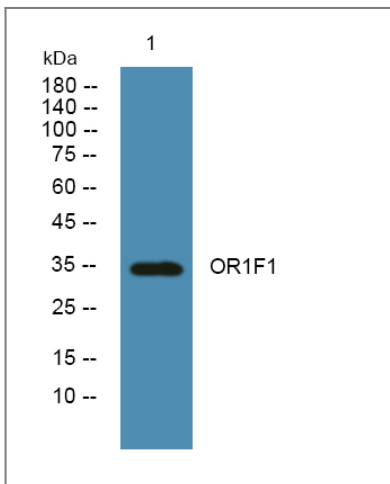
Protein Name Olfactory receptor 1F1 (Olfactory receptor 16-35) (OR16-35) (Olfactory receptor 1F10) (Olfactory receptor 1F4) (Olfactory receptor 1F5) (Olfactory receptor 1F6) (Olfactory receptor 1F7) (Olfactory receptor 1F8) (Olfactory receptor 1F9) (Olfactory receptor OR16-4)

Organism	Gene ID	UniProt ID
Human	4992;	O43749;

Cellular Localization Cell membrane; Multi-pass membrane protein.

Function Function:Odorant receptor .,similarity:Belongs to the G-protein coupled receptor 1 family.,

Validation Data



Western blot analysis of lysates from KB cells, primary antibody was diluted at 1:1000, 4° over night

Contact information

Orders: order@immunoway.com
Support: tech@immunoway.com
Telephone: 877-594-3616 (Toll Free), 408-747-0185
Website: <http://www.immunoway.com>
Address: 2200 Ringwood Ave San Jose, CA 95131 USA



Please scan the QR code to access additional product information:
OR1F1 Rabbit pAb

For Research Use Only. Not for Use in Diagnostic Procedures.

[Antibody](#) | [ELISA Kits](#) | [Protein](#) | [Reagents](#)