

OR1E2 Rabbit pAb

CatalogNo: YN2593

Key Features

Host Species

- Rabbit

Reactivity

- Human

Applications

- WB,ELISA

MW

- 35kD (Observed)

Isotype

- IgG

Storage

Storage* -15°C to -25°C/1 year(Do not lower than -25°C)

Formulation Liquid in PBS containing 50% glycerol,0.5% BSA and 0.02% sodium azide.

Recommended Dilution Ratios

WB 1:500-2000

ELISA 1:5000-20000

Basic Information

Clonality Polyclonal

Immunogen Information

Immunogen Synthesized peptide derived from part region of human protein

Specificity OR1E2 Polyclonal Antibody detects endogenous levels of protein.

Target Information

Gene name OR1E2 OR1E4

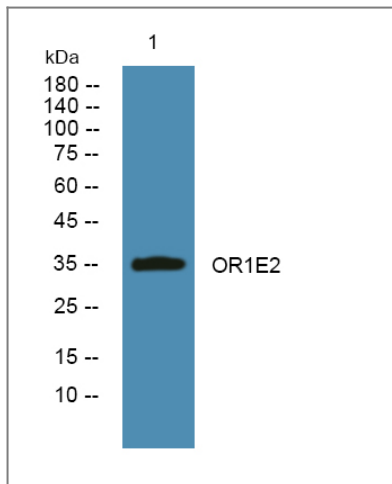
Protein Name Olfactory receptor 1E2 (Olfactory receptor 17-93/17-135/17-136) (OR17-135) (OR17-136) (OR17-93) (Olfactory receptor 1E4)

Organism	Gene ID	UniProt ID
Human	8388 ;	P47887 ;

Cellular Localization Cell membrane; Multi-pass membrane protein.

Function Function:Odorant receptor .,miscellaneous:The sequence shown here is derived from an EMBL/GenBank/DDBJ third party annotation (TPA) entry.,similarity:Belongs to the G-protein coupled receptor 1 family.,

Validation Data



Western blot analysis of lysates from Jurkat cells, primary antibody was diluted at 1:1000, 4° over night

Contact information

Orders: order@immunoway.com
Support: tech@immunoway.com
Telephone: 877-594-3616 (Toll Free), 408-747-0185
Website: <http://www.immunoway.com>
Address: 2200 Ringwood Ave San Jose, CA 95131 USA



Please scan the QR code to access additional product information:
OR1E2 Rabbit pAb

For Research Use Only. Not for Use in Diagnostic Procedures.

[Antibody](#) | [ELISA Kits](#) | [Protein](#) | [Reagents](#)