

## PGRP3 Rabbit pAb

CatalogNo: YN2472

### Key Features

#### Host Species

- Rabbit

#### Reactivity

- Human, Mouse

#### Applications

- WB, ELISA

#### MW

- 37kD (Observed)

#### Isotype

- IgG

### Storage

#### Storage\*

-15°C to -25°C/1 year (Do not lower than -25°C)

#### Formulation

Liquid in PBS containing 50% glycerol, 0.5% BSA and 0.02% sodium azide.

### Recommended Dilution Ratios

WB 1:500-2000

ELISA 1:5000-20000

### Basic Information

#### Clonality

Polyclonal

### Immunogen Information

#### Immunogen

Synthesized peptide derived from human protein . at AA range: 51-100

#### Specificity

PGRP3 Polyclonal Antibody detects endogenous levels of protein.

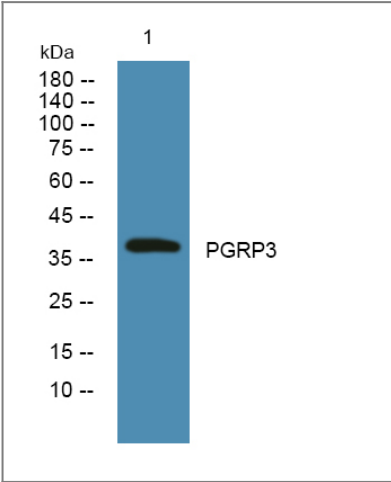
### Target Information

#### Gene name

PGLYRP3 PGRPIA

<b>Protein Name</b>	Peptidoglycan recognition protein 3 (Peptidoglycan recognition protein I-alpha) (PGLYRP1alpha) (PGRP-I-alpha) (Peptidoglycan recognition protein intermediate alpha)		
	<b>Organism</b>	<b>Gene ID</b>	<b>UniProt ID</b>
	Human	<a href="#">114771</a> ;	<a href="#">Q96LB9</a> ;
	Mouse		<a href="#">A1A547</a> ;
<b>Cellular Localization</b>	Secreted .		
<b>Tissue specificity</b>	Detected in skin epidermis, eccrine sweat glands and ducts, ciliary body epithelial cells of the eye, in small intestine, colon, stomach and in mature epithelial cells of the tongue (at protein level). Highly expressed in skin and esophagus, expressed also in tonsils and thymus and to a much lesser extent in the stomach, descending colon, rectum and brain.		
<b>Function</b>	Function: Binds to murein peptidoglycans (PGN) of Gram-positive bacteria. May play a role in innate immunity., similarity: Belongs to the N-acetylmuramoyl-L-alanine amidase 2 family., subunit: Monomer and dimer., tissue specificity: Highly expressed in the esophagus, expressed also in tonsils and thymus and to a much lesser extent in the stomach, descending colon, rectum and brain.,		

Validation Data



Western blot analysis of lysates from DU145 cells, primary antibody was diluted at 1:1000, 4° over night

Contact information

Orders: order@immunoway.com  
Support: tech@immunoway.com  
Telephone: 877-594-3616 (Toll Free), 408-747-0185  
Website: http://www.immunoway.com  
Address: 2200 Ringwood Ave San Jose, CA 95131 USA



Please scan the QR code to access additional product information:  
**PGRP3 Rabbit pAb**

