

# Methionyl Aminopeptidase 1 Rabbit pAb

CatalogNo: YN2148

## Key Features

### Host Species

- Rabbit

### Reactivity

- Human, Mouse

### Applications

- WB, ELISA

### MW

- 42kD (Observed)

### Isotype

- IgG

## Recommended Dilution Ratios

WB 1:500-2000

ELISA 1:5000-20000

## Storage

**Storage\*** -15°C to -25°C/1 year (Do not lower than -25°C)

**Formulation** Liquid in PBS containing 50% glycerol, 0.5% BSA and 0.02% sodium azide.

## Basic Information

**Clonality** Polyclonal

## Immunogen Information

**Immunogen** Synthesized peptide derived from part region of human protein

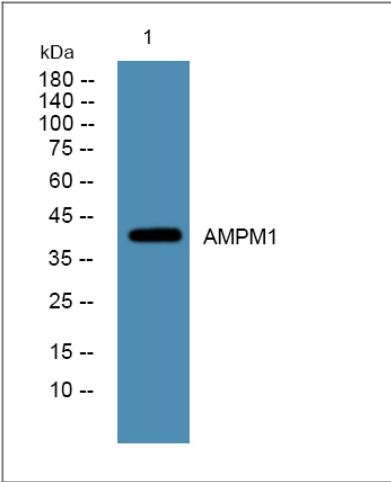
**Specificity** AMPM1 Polyclonal Antibody detects endogenous levels of protein.

## Target Information

**Gene name** METAP1 KIAA0094

<b>Protein Name</b>	Methionine aminopeptidase 1 (MAP 1) (MetAP 1) (Peptidase M 1)		
	<b>Organism</b>	<b>Gene ID</b>	<b>UniProt ID</b>
	Human	<a href="#">23173;</a>	<a href="#">P53582;</a>
	Mouse		<a href="#">Q8BP48;</a>
<b>Cellular Localization</b>	Cytoplasm .		
<b>Tissue specificity</b>	Bone marrow,Placenta,Testis,		
<b>Function</b>	Catalytic activity:Release of N-terminal amino acids, preferentially methionine, from peptides and arylamides.,cofactor:Binds 1 sodium ion per subunit. The sodium ion has a structural role.,cofactor:Binds 2 cobalt ions per subunit.,cofactor:Binds 2 cobalt ions per subunit. The true nature of the physiological cofactor is under debate. The enzyme is also active with zinc, manganese or divalent iron ions.,Function:Removes the amino-terminal methionine from nascent proteins.,Function:Removes the amino-terminal methionine from nascent proteins. Required for normal progression through the cell cycle.,similarity:Belongs to the peptidase M24A family.,		

Validation Data



Western blot analysis of lysates from K562 cells, primary antibody was diluted at 1:1000, 4°over night

Contact information

Orders: order@immunoway.com  
Support: tech@immunoway.com  
Telephone: 877-594-3616 (Toll Free), 408-747-0185  
Website: http://www.immunoway.com  
Address: 2200 Ringwood Ave San Jose, CA 95131 USA



Please scan the QR code to access additional product information:  
**Methionyl  
Aminopeptidase 1  
Rabbit pAb**

