

TAOK2 Rabbit pAb

CatalogNo: YN1886

Key Features

Host Species

- Rabbit

Reactivity

- Human, Mouse, Rat

Applications

- WB, ELISA

MW

- 135kD (Observed)

Isotype

- IgG

Recommended Dilution Ratios

WB 1:500-2000**ELISA 1:5000-20000**

Storage

Storage*

-15°C to -25°C/1 year (Do not lower than -25°C)

Formulation

Liquid in PBS containing 50% glycerol, 0.5% BSA and 0.02% sodium azide.

Basic Information

Clonality

Polyclonal

Immunogen Information

Immunogen

Synthesized peptide derived from part region of human protein

Specificity

TAOK2 Polyclonal Antibody detects endogenous levels of protein.

Target Information

Gene name

TAOK2 KIAA0881 MAP3K17 PSK PSK1 UNQ2971/PRO7431

Protein Name Serine/threonine-protein kinase TAO2 (Kinase from chicken homolog C) (hKFC-C) (Prostate-derived sterile 20-like kinase 1) (PSK-1) (PSK1) (Prostate-derived STE20-like kinase 1) (Thousand and one amino acid protein kinase 2)

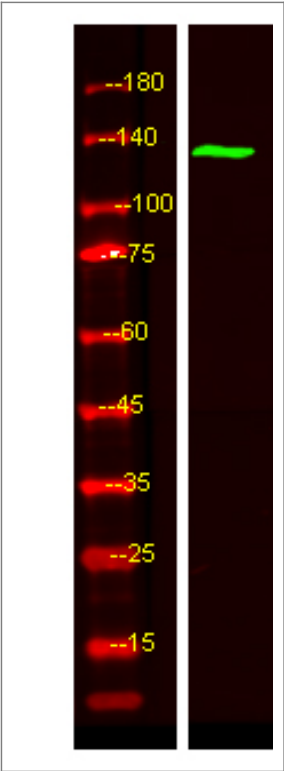
Organism	Gene ID	UniProt ID
Human	9344;	Q9UL54;
Mouse		Q6ZQ29;
Rat		Q9JLS3;

Cellular Localization Cytoplasmic vesicle membrane ; Multi-pass membrane protein . Cytoplasm, cytoskeleton. Nucleus. Catalytically active full-length phosphorylated isoform 1 localizes to microtubules in the cytoplasm predominantly on microtubule cables positioned around the nucleus. A C-terminally truncated form of isoform 1 is present in the nucleus; isoform 2 and kinase-defective, as well as full-length isoform 1 are excluded from the nucleus.; [Isoform 2]: Cell projection, dendrite. In dendrites, colocalizes with PCDH8. .

Tissue specificity Ubiquitously expressed, with a higher level of expression in testis and brain.

Function Catalytic activity:ATP + a protein = ADP + a phosphoprotein.,cofactor:Magnesium.,Function:Activates the JNK MAP kinase pathway through the specific activation of the upstream MKK3 and MKK6 kinases.,similarity:Belongs to the protein kinase superfamily.,similarity:Belongs to the protein kinase superfamily. STE Ser/Thr protein kinase family. STE20 subfamily.,similarity:Contains 1 protein kinase domain.,subcellular location:Found to be perinuclear and localized to vesicular compartment.,subunit:Interacts with MKK3 and MKK6 (By similarity). Self-associates.,tissue specificity:Ubiquitously expressed, with a higher level of expression in testis and brain.,

Validation Data



Western Blot analysis of HEK293 lysis, using primary antibody at 1:1000 dilution. Secondary antibody(catalog#:RS23920) was diluted at 1:10000

| Contact information

Orders: order@immunoway.com
Support: tech@immunoway.com
Telephone: 877-594-3616 (Toll Free), 408-747-0185
Website: <http://www.immunoway.com>
Address: 2200 Ringwood Ave San Jose, CA 95131 USA



Please scan the QR code
to access additional
product information:
TAOK2 Rabbit pAb

For Research Use Only. Not for Use in Diagnostic Procedures.

[Antibody](#) | [ELISA Kits](#) | [Protein](#) | [Reagents](#)