

IFNA2 Rabbit pAb

CatalogNo: YN1759

Key Features

Host Species

- Rabbit

Reactivity

- Human, Mouse

Applications

- WB, ELISA

MW

- 20kD (Observed)

Isotype

- IgG

Recommended Dilution Ratios

WB 1:500-2000

ELISA 1:5000-20000

Storage

Storage* -15°C to -25°C/1 year (Do not lower than -25°C)

Formulation Liquid in PBS containing 50% glycerol, and 0.02% sodium azide.

Basic Information

Clonality Polyclonal

Immunogen Information

Immunogen Synthesized peptide derived from part region of human protein

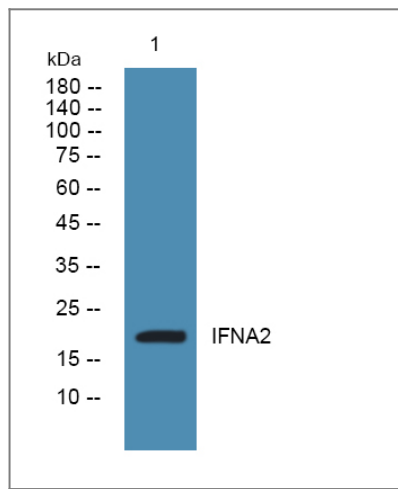
Specificity IFNA2 Polyclonal Antibody detects endogenous levels of protein.

Target Information

Gene name IFNA2

Protein Name	Interferon alpha-2 (IFN-alpha-2) (Interferon alpha-A) (LeIF A)		
	Organism	Gene ID	UniProt ID
	Human	3440;	P01563;
	Mouse		P01573;
Cellular Localization	Secreted .		
Tissue specificity	Bone marrow tumor,PCR rescued clones,Placenta,Pooled tissue,		
Function	Function:Produced by macrophages, IFN-alpha have antiviral activities. Interferon stimulates the production of two enzymes: a protein kinase and an oligoadenylate synthetase.,pharmaceutical:Available under the names Roferon-A (Roche) or Intron-A (Schering-Plough). Used as an anticancer drug for its antiproliferative activity.,polymorphism:Three forms exist; alpha-2a (shown here), alpha-2b and alpha-2c.,similarity:Belongs to the alpha/beta interferon family.,		

Validation Data



Western blot analysis of lysates from SW480 cells, primary antibody was diluted at 1:1000, 4°over night

Contact information

Orders: order@immunoway.com
 Support: tech@immunoway.com
 Telephone: 877-594-3616 (Toll Free), 408-747-0185
 Website: <http://www.immunoway.com>
 Address: 2200 Ringwood Ave San Jose, CA 95131 USA



Please scan the QR code
 to access additional
 product information:
IFNA2 Rabbit pAb

