

## CY24A Rabbit pAb

CatalogNo: YN1733

### | Key Features

#### Host Species

- Rabbit

#### Reactivity

- Human,Rat,Mouse,

#### Applications

- WB,ELISA

#### MW

- 21kD (Observed)

#### Isotype

- IgG

### | Recommended Dilution Ratios

**WB 1:500-2000**

**ELISA 1:5000-20000**

### | Storage

**Storage\*** -15°C to -25°C/1 year(Do not lower than -25°C)

**Formulation** Liquid in PBS containing 50% glycerol, and 0.02% sodium azide.

### | Basic Information

**Clonality** Polyclonal

### | Immunogen Information

**Immunogen** Synthesized peptide derived from human protein . at AA range: 80-160

**Specificity** CY24A Polyclonal Antibody detects endogenous levels of protein.

### | Target Information

**Gene name** CYBA

**Protein Name** Cytochrome b-245 light chain (Cytochrome b(558) alpha chain) (Cytochrome b558 subunit alpha) (Neutrophil cytochrome b 22 kDa polypeptide) (Superoxide-generating NADPH oxidase light chain subunit) (p22 phagocyte B-cytochrome) (p22-phox) (p22phox)

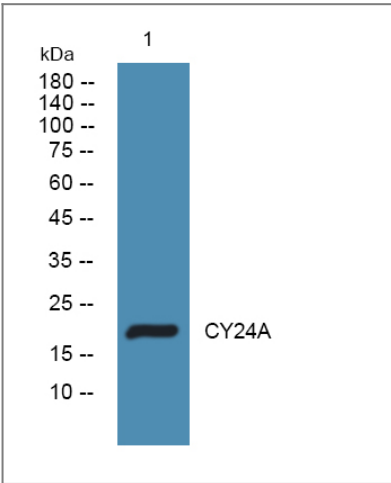
Organism	Gene ID	UniProt ID
Human	<a href="#">1535;</a>	<a href="#">P13498;</a>
Mouse		<a href="#">Q61462;</a>
Rat		<a href="#">Q62737;</a>

**Cellular Localization** Cell membrane . As unassembled monomer may localize to the endoplasmic reticulum. .

**Tissue specificity** Brain,

**Function** Disease:Defects in CYBA are a cause of chronic granulomatous disease autosomal recessive cytochrome-b-negative (ARCGD) [MIM:233690]. Chronic granulomatous disease is a genetically heterogeneous disorder characterized by the inability of neutrophils and phagocytes to kill microbes that they have ingested. Patients suffer from life-threatening bacterial/fungal infections.,Function:Critical component of the membrane-bound oxidase of phagocytes that generates superoxide. Associates with NOX3 to form a functional NADPH oxidase constitutively generating superoxide.,miscellaneous:The heme prosthetic group could be coordinated with residues of the light chain, the heavy chain, or both, and it is possible that more than one heme is present per cytochrome b-245.,online information:CYBA mutation db,online information:The Singapore human mutation and polymorphism database,similarity:Belongs to the p22phox family.,subunit:Composed of a heavy chain (beta) and a light chain (alpha). Interacts with DUOX1, DUOX2 and TPO. Interacts with NOX3 and NOX4.,

## Validation Data



Western blot analysis of lysates from A431 cells, primary antibody was diluted at 1:1000, 4°over night

## Contact information

Orders: order@immunoway.com  
Support: tech@immunoway.com  
Telephone: 877-594-3616 (Toll Free), 408-747-0185  
Website: <http://www.immunoway.com>  
Address: 2200 Ringwood Ave San Jose, CA 95131 USA



Please scan the QR code  
to access additional  
product information:  
**CY24A Rabbit pAb**

---

For Research Use Only. Not for Use in Diagnostic Procedures.

[Antibody](#) | [ELISA Kits](#) | [Protein](#) | [Reagents](#)