

SCRT1 Rabbit pAb

CatalogNo: YN1441

Key Features

Host Species

- Rabbit

Reactivity

- Human, Mouse

Applications

- WB, ELISA

MW

- 38kD (Observed)

Isotype

- IgG

Storage

Storage* -15°C to -25°C/1 year (Do not lower than -25°C)

Formulation Liquid in PBS containing 50% glycerol, 0.5% BSA and 0.02% sodium azide.

Recommended Dilution Ratios

WB 1:500-2000

ELISA 1:5000-20000

Basic Information

Clonality Polyclonal

Immunogen Information

Immunogen Synthesized peptide derived from part region of human protein

Specificity SCRT1 Polyclonal Antibody detects endogenous levels of protein.

Target Information

Gene name SCRT1

Protein Name Transcriptional repressor scratch 1 (Scratch homolog 1 zinc finger protein) (SCRT) (Scratch 1) (hScrt)

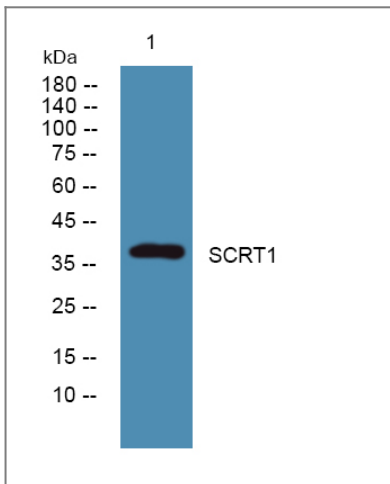
Organism	Gene ID	UniProt ID
Human	83482 ;	Q9BWW7 ;
Mouse		Q99M85 ;

Cellular Localization Nucleus .

Tissue specificity Brain specific.

Function Domain:The N-terminal non zinc-finger region mediates the repressor activity.,Function:Transcriptional repressor that binds E-box motif CAGGTG. Can modulate the action of basic helix-loop-helix (bHLH) transcription factors, critical for neuronal differentiation.,similarity:Belongs to the snail C2H2-type zinc-finger protein family.,similarity:Contains 5 C2H2-type zinc fingers.,tissue specificity:Brain specific.,

Validation Data



Western blot analysis of lysates from DU145 cells, primary antibody was diluted at 1:1000, 4° over night

Contact information

Orders: order@immunoway.com
Support: tech@immunoway.com
Telephone: 877-594-3616 (Toll Free), 408-747-0185
Website: <http://www.immunoway.com>
Address: 2200 Ringwood Ave San Jose, CA 95131 USA



Please scan the QR code to access additional product information:
SCRT1 Rabbit pAb

