

SPA9 Rabbit pAb

CatalogNo: YN1287

Key Features

Host Species

- Rabbit

Reactivity

- Human, Mouse

Applications

- WB, ELISA

MW

- 45kD (Observed)

Isotype

- IgG

Storage

Storage* -15°C to -25°C/1 year (Do not lower than -25°C)**Formulation** Liquid in PBS containing 50% glycerol, 0.5% BSA and 0.02% sodium azide.

Recommended Dilution Ratios

WB 1:500-2000**ELISA 1:5000-20000**

Basic Information

Clonality Polyclonal

Immunogen Information

Immunogen Synthesized peptide derived from part region of human protein**Specificity** SPA9 Polyclonal Antibody detects endogenous levels of protein.

Target Information

Gene name SERPINA9 GCET1 SERPINA11 UNQ692/PRO1337

Protein Name Serpin A9 (Centerin) (Germinal center B-cell-expressed transcript 1 protein)

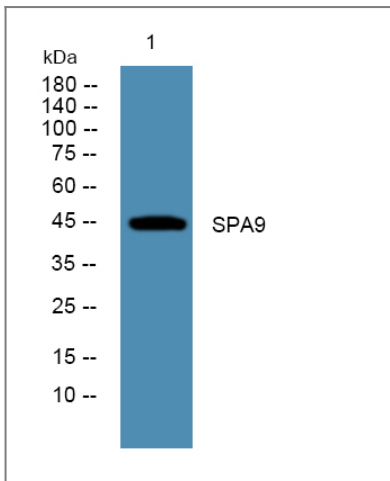
Organism	Gene ID	UniProt ID
Human	327657 ;	Q86WD7 ;
Mouse		Q9D7D2 ;

Cellular Localization [Isoform 1]: Secreted.; [Isoform 2]: Cytoplasm .; [Isoform 3]: Cytoplasm .; [Isoform 4]: Cytoplasm .; [Isoform 5]: Cytoplasm .; [Isoform 6]: Cytoplasm .; [Isoform 7]: Membrane ; Single-pass type II membrane protein .

Tissue specificity Highly expressed in normal germinal center (GC) B-cells and GC B-cell-derived malignancies.

Function similarity:Belongs to the serpin family.,tissue specificity:Highly expressed in normal germinal center (GC) B-cells and GC B-cell-derived malignancies.,

Validation Data



Western blot analysis of lysates from K562 cells, primary antibody was diluted at 1:1000, 4°C over night

Contact information

Orders: order@immunoway.com
Support: tech@immunoway.com
Telephone: 877-594-3616 (Toll Free), 408-747-0185
Website: <http://www.immunoway.com>
Address: 2200 Ringwood Ave San Jose, CA 95131 USA



Please scan the QR code to access additional product information:
SPA9 Rabbit pAb