

RAB36 Rabbit pAb

CatalogNo: YN1178

Key Features

Host Species

- Rabbit

Reactivity

- Human, Mouse

Applications

- WB, ELISA

MW

- 36kD (Observed)

Isotype

- IgG

Storage

Storage* -15°C to -25°C/1 year (Do not lower than -25°C)

Formulation Liquid in PBS containing 50% glycerol, 0.5% BSA and 0.02% sodium azide.

Recommended Dilution Ratios

WB 1:500-2000

ELISA 1:5000-20000

Basic Information

Clonality Polyclonal

Immunogen Information

Immunogen Synthesized peptide derived from human protein . at AA range: 170-250

Specificity RAB36 Polyclonal Antibody detects endogenous levels of protein.

Target Information

Gene name RAB36

Protein Name Ras-related protein Rab-36

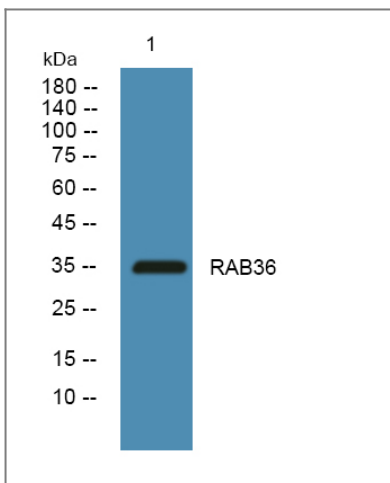
Organism	Gene ID	UniProt ID
Human	9609 ;	O95755 ;
Mouse		Q8CAM5 ;

Cellular Localization Golgi apparatus membrane; Lipid-anchor.

Tissue specificity Ubiquitously present in all tissues examined.

Function Function:Protein transport. Probably involved in vesicular traffic.,similarity:Belongs to the small GTPase superfamily. Rab family.,tissue specificity:Ubiquitously present in all tissues examined.,

Validation Data



Western blot analysis of lysates from K562 cells, primary antibody was diluted at 1:1000, 4°C over night

Contact information

Orders: order@immunoway.com
Support: tech@immunoway.com
Telephone: 877-594-3616 (Toll Free), 408-747-0185
Website: <http://www.immunoway.com>
Address: 2200 Ringwood Ave San Jose, CA 95131 USA



Please scan the QR code to access additional product information:
RAB36 Rabbit pAb