

PRP8 Rabbit pAb

CatalogNo: YN1098

Key Features

Host Species

- Rabbit

Reactivity

- Human, Mouse

Applications

- IHC, IF

MW

- 256kD (Observed)

Isotype

- IgG

Storage

Storage* -15°C to -25°C/1 year (Do not lower than -25°C)

Formulation Liquid in PBS containing 50% glycerol, 0.5% BSA and 0.02% sodium azide.

Recommended Dilution Ratios

IHC 1:50-300

IF 1:50-200

Basic Information

Clonality Polyclonal

Immunogen Information

Immunogen Synthesized peptide derived from human protein . at AA range: 160-240

Specificity PRP8 Polyclonal Antibody detects endogenous levels of protein.

Target Information

Gene name PRPF8 PRPC8

Protein Name Pre-mRNA-processing-splicing factor 8 (220 kDa U5 snRNP-specific protein) (PRP8 homolog) (Splicing factor Prp8) (p220)

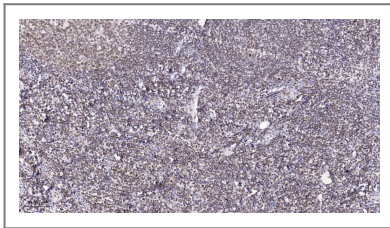
Organism	Gene ID	UniProt ID
Human	10594;	Q6P2Q9;
Mouse		Q99PV0;

Cellular Localization Nucleus . Nucleus speckle .

Tissue specificity Widely expressed.

Function Disease:Defects in PRPF8 are the cause of retinitis pigmentosa type 13 (RP13) [MIM:600059]. RP leads to degeneration of retinal photoreceptor cells. Patients typically have night vision blindness and loss of midperipheral visual field. As their condition progresses, they lose their far peripheral visual field and eventually central vision as well. RP13 inheritance is autosomal dominant.,Function:Central component of the spliceosome, which may play a role in aligning the pre-mRNA 5'- and 3'-exons for ligation. Interacts with U5 snRNA, and with pre-mRNA 5'-splice sites in B spliceosomes and 3'-splice sites in C spliceosomes.,PTM:Phosphorylated upon DNA damage, probably by ATM or ATR.,similarity:Contains 1 MPN (JAB/Mov34) domain.,subunit:Part of the U5 snRNP complex, and of U5.4/6 and U5.U4atac/U6atac snRNP complexes in U2- and U12-dependent spliceosomes, respectively. Found in a mRNA splicing-dependent exon junction complex (EJC) with SRRM1. Interacts with U5 snRNP proteins SNRP116 and WDR57/SPF38.,tissue specificity:Widely expressed.,

Validation Data



Immunohistochemical analysis of paraffin-embedded human tonsil. 1, Antibody was diluted at 1:200(4° overnight). 2, Tris-EDTA,pH9.0 was used for antigen retrieval. 3,Secondary antibody was diluted at 1:200(room temperature, 45min).

Contact information

Orders: order@immunoway.com
Support: tech@immunoway.com
Telephone: 877-594-3616 (Toll Free), 408-747-0185
Website: <http://www.immunoway.com>
Address: 2200 Ringwood Ave San Jose, CA 95131 USA



Please scan the QR code to access additional product information:
PRP8 Rabbit pAb

