

NOL7 Rabbit pAb

CatalogNo: YN1011

Key Features

Host Species

- Rabbit

Reactivity

- Human, Mouse

Applications

- WB, ELISA

MW

- 28kD (Observed)

Isotype

- IgG

Storage

Storage* -15°C to -25°C/1 year (Do not lower than -25°C)

Formulation Liquid in PBS containing 50% glycerol, 0.5% BSA and 0.02% sodium azide.

Recommended Dilution Ratios

WB 1:500-2000

ELISA 1:5000-20000

Basic Information

Clonality Polyclonal

Immunogen Information

Immunogen Synthesized peptide derived from human protein . at AA range: 190-270

Specificity NOL7 Polyclonal Antibody detects endogenous levels of protein.

Target Information

Gene name NOL7 C6orf90 NOP27

Protein Name Nucleolar protein 7 (Nucleolar protein of 27 kDa)

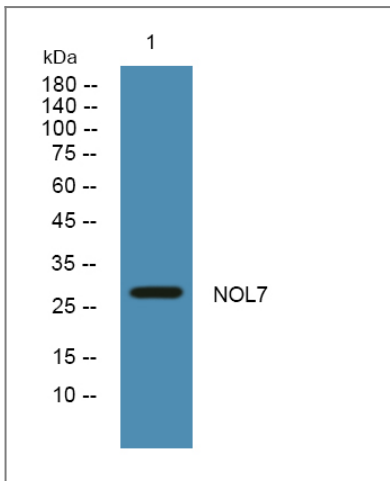
Organism	Gene ID	UniProt ID
Human	51406 ;	Q9UMY1 ;
Mouse		Q9D7Z3 ;

Cellular Localization Nucleus, nucleolus .

Tissue specificity Expressed in numerous tissues. Particularly prevalent in the adrenal gland, thyroid gland, heart and skeletal muscle.

Function sequence Caution:Contaminating sequence. Potential poly-A sequence.,tissue specificity:Expressed in numerous tissues. Particularly prevalent in the adrenal gland, thyroid gland, heart and skeletal muscle.,

Validation Data



Western blot analysis of lysates from SH-SY5Y cells, primary antibody was diluted at 1:1000, 4° over night

Contact information

Orders: order@immunoway.com
Support: tech@immunoway.com
Telephone: 877-594-3616 (Toll Free), 408-747-0185
Website: <http://www.immunoway.com>
Address: 2200 Ringwood Ave San Jose, CA 95131 USA



Please scan the QR code to access additional product information:
NOL7 Rabbit pAb