

KI2L2 Rabbit pAb

CatalogNo: YN0812

Key Features

Host Species

- Rabbit

Reactivity

- Human

Applications

- WB,ELISA

MW

- 38kD (Observed)

Isotype

- IgG

Recommended Dilution Ratios

WB 1:500-2000

ELISA 1:5000-20000

Storage

Storage* -15°C to -25°C/1 year(Do not lower than -25°C)

Formulation Liquid in PBS containing 50% glycerol,0.5% BSA and 0.02% sodium azide.

Basic Information

Clonality Polyclonal

Immunogen Information

Immunogen Synthesized peptide derived from part region of human protein

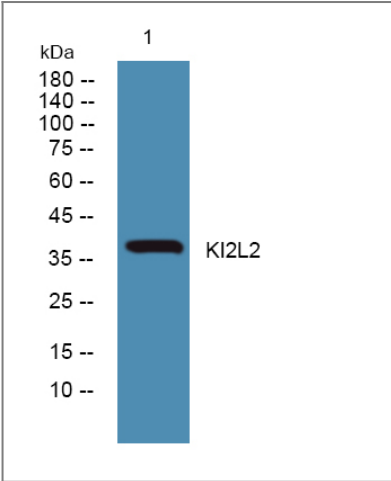
Specificity KI2L2 Polyclonal Antibody detects endogenous levels of protein.

Target Information

Gene name KIR2DL2 CD158B1 NKAT6

Protein Name	Killer cell immunoglobulin-like receptor 2DL2 (CD158 antigen-like family member B1) (MHC class I NK cell receptor) (Natural killer-associated transcript 6) (NKAT-6) (p58 natural killer cell receptor clone CL-43) (p58 NK receptor CL-43) (CD antigen CD158b1)		
	Organism	Gene ID	UniProt ID
	Human	3803 ;	P43627 ;
Cellular Localization	Cell membrane; Single-pass type I membrane protein.		
Tissue specificity	Natural killer cell		
Function	Function:Receptor on natural killer (NK) cells for HLA-C alleles. Inhibits the activity of NK cells thus preventing cell lysis.,miscellaneous:PubMed:15580659, identified a chromosomal rearrangement producing a recombinant gene composed of the promoter and first exon of KIR2DL5A fused to KIR3DP1 which was originally thought to be a pseudogene. This leads to the expression in 4.5 percent of a Spanish Caucasoid population of an mRNA which may encode a chimeric protein KIR2DL5A/KIR3DP1.,similarity:Belongs to the immunoglobulin superfamily.,similarity:Contains 2 Ig-like C2-type (immunoglobulin-like) domains.,similarity:Contains 3 Ig-like C2-type (immunoglobulin-like) domains.,tissue specificity:Expressed in peripheral blood cells.,		

Validation Data



Western blot analysis of lysates from DU145 cells, primary antibody was diluted at 1:1000, 4°over night

Contact information

Orders: order@immunoway.com
Support: tech@immunoway.com
Telephone: 877-594-3616 (Toll Free), 408-747-0185
Website: http://www.immunoway.com
Address: 2200 Ringwood Ave San Jose, CA 95131 USA



Please scan the QR code to access additional product information:
KI2L2 Rabbit pAb

