

NKX22 Rabbit pAb

CatalogNo: YN0790

Orthogonal Validated 

Key Features

Host Species

- Rabbit

Reactivity

- Human, Mouse

Applications

- WB, ELISA

MW

- 30kD (Observed)

Isotype

- IgG

Recommended Dilution Ratios

WB 1:500-2000**ELISA 1:5000-20000**

Storage

Storage*

-15°C to -25°C/1 year (Do not lower than -25°C)

Formulation

Liquid in PBS containing 50% glycerol, 0.5% BSA and 0.02% sodium azide.

Basic Information

Clonality

Polyclonal

Immunogen Information

Immunogen

Synthesized peptide derived from part region of human protein

Specificity

NKX22 Polyclonal Antibody detects endogenous levels of protein.

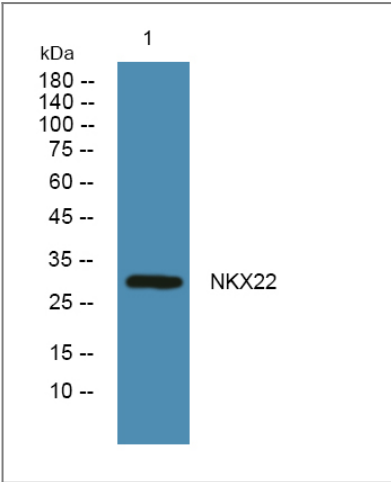
Target Information

Gene name

NKX2-2 NKX2.2 NKX2B

Protein Name	Homeobox protein Nkx-2.2 (Homeobox protein NK-2 homolog B)		
	Organism	Gene ID	UniProt ID
	Human	4821 ;	O95096 ;
	Mouse		P42586 ;
Cellular Localization	Nucleus .		
Tissue specificity	Brain,		
Function	Domain:The homeodomain is essential for interaction with OLIG2.,Function:May be involved in specifying diencephalic neuromeric boundaries, and in controlling the expression of genes that play a role in axonal guidance.,similarity:Belongs to the NK-2 homeobox family.,similarity:Contains 1 homeobox DNA-binding domain.,subunit:Interacts with OLIG2.,		

Validation Data



Western blot analysis of lysates from DU145 cells, primary antibody was diluted at 1:1000, 4°over night

Contact information

Orders: order@immunoway.com
 Support: tech@immunoway.com
 Telephone: 877-594-3616 (Toll Free), 408-747-0185
 Website: <http://www.immunoway.com>
 Address: 2200 Ringwood Ave San Jose, CA 95131 USA



Please scan the QR code
 to access additional
 product information:
NKX22 Rabbit pAb