

REM2 Rabbit pAb

CatalogNo: YN0747

| Key Features

Host Species

- Rabbit

Reactivity

- Human, Mouse, Rat

Applications

- WB, ELISA

MW

- 37kD (Observed)

Isotype

- IgG

| Recommended Dilution Ratios

WB 1:500-2000

ELISA 1:5000-20000

| Storage

Storage* -15°C to -25°C/1 year (Do not lower than -25°C)

Formulation Liquid in PBS containing 50% glycerol, 0.5% BSA and 0.02% sodium azide.

| Basic Information

Clonality Polyclonal

| Immunogen Information

Immunogen Synthesized peptide derived from part region of human protein

Specificity REM2 Polyclonal Antibody detects endogenous levels of protein.

| Target Information

Gene name REM2

Protein Name

GTP-binding protein REM 2 (Rad and Gem-like GTP-binding protein 2)

Organism	Gene ID	UniProt ID
Human	161253 ;	Q8IYK8 ;
Mouse		Q8VEL9 ;
Rat		Q9WTY2 ;

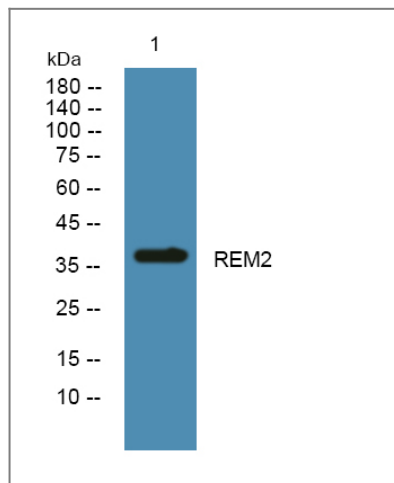
Cellular Localization

Cell membrane .

Tissue specificity Ovary,**Function**

Caution:It is uncertain whether Met-1 or Met-59 is the initiator.,Function: Binds GTP saturably and exhibits a low intrinsic rate of GTP hydrolysis.,similarity: Belongs to the small GTPase superfamily. RGK family.,

Validation Data



Western blot analysis of lysates from A431 cells, primary antibody was diluted at 1:1000, 4° over night

Contact information

Orders: order@immunoway.com
Support: tech@immunoway.com
Telephone: 877-594-3616 (Toll Free), 408-747-0185
Website: <http://www.immunoway.com>
Address: 2200 Ringwood Ave San Jose, CA 95131 USA



Please scan the QR code to access additional product information:
REM2 Rabbit pAb