

PSF2 Rabbit pAb

CatalogNo: YN0649

Key Features

Host Species

- Rabbit

Reactivity

- Human, Mouse

Applications

- WB, ELISA

MW

- 20kD (Observed)

Isotype

- IgG

Storage

Storage*

-15°C to -25°C/1 year (Do not lower than -25°C)

Formulation

Liquid in PBS containing 50% glycerol, 0.5% BSA and 0.02% sodium azide.

Recommended Dilution Ratios

WB 1:500-2000

ELISA 1:5000-20000

Basic Information

Clonality

Polyclonal

Immunogen Information

Immunogen

Synthesized peptide derived from part region of human protein

Specificity

PSF2 Polyclonal Antibody detects endogenous levels of protein.

Target Information

Gene name

GIN52 PSF2 CGI-122 DC5 HSPC037

Protein Name DNA replication complex GINS protein PSF2 (GINS complex subunit 2)

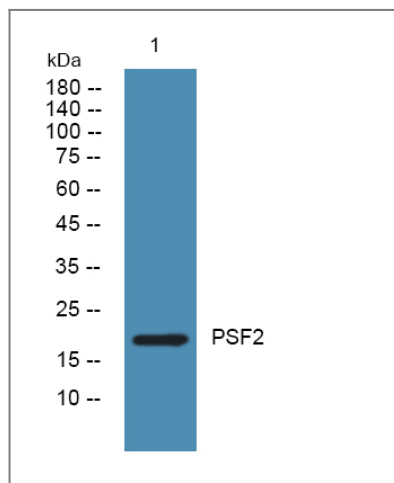
Organism	Gene ID	UniProt ID
Human	51659 ;	Q9Y248 ;
Mouse		Q9D600 ;

Cellular Localization Nucleus . Chromosome . Associates with chromatin. .

Tissue specificity Brain,Dendritic cell,Umbilical cord blood,

Function Function:The GINS complex plays an essential role in the initiation of DNA replication, and progression of DNA replication forks. GINS complex seems to bind preferentially to single-stranded DNA.,mass spectrometry:This is the measured mass for the GINS complex PubMed:17557111,PTM:Phosphorylated upon DNA damage, probably by ATM or ATR.,similarity:Belongs to the GINS2/PSF2 family.,subunit:Component of the GINS complex which is a heterotetramer of GINS1, GINS2, GINS3 and GINS4. Forms a stable subcomplex with GINS3. GINS complex interacts with DNA primase in vitro.,

Validation Data



Western blot analysis of lysates from A431 cells, primary antibody was diluted at 1:1000, 4° over night

Contact information

Orders: order@immunoway.com
Support: tech@immunoway.com
Telephone: 877-594-3616 (Toll Free), 408-747-0185
Website: <http://www.immunoway.com>
Address: 2200 Ringwood Ave San Jose, CA 95131 USA



Please scan the QR code to access additional product information:
PSF2 Rabbit pAb

