

## CNTP4 Rabbit pAb

CatalogNo: YN0620

### Key Features

#### Host Species

- Rabbit

#### Reactivity

- Human, Mouse

#### Applications

- WB, ELISA

#### MW

- 143kD (Observed)

#### Isotype

- IgG

### Storage

#### Storage\*

-15°C to -25°C/1 year (Do not lower than -25°C)

#### Formulation

Liquid in PBS containing 50% glycerol, 0.5% BSA and 0.02% sodium azide.

### Recommended Dilution Ratios

WB 1:500-2000

ELISA 1:5000-20000

### Basic Information

#### Clonality

Polyclonal

### Immunogen Information

#### Immunogen

Synthesized peptide derived from part region of human protein

#### Specificity

CNTP4 Polyclonal Antibody detects endogenous levels of protein.

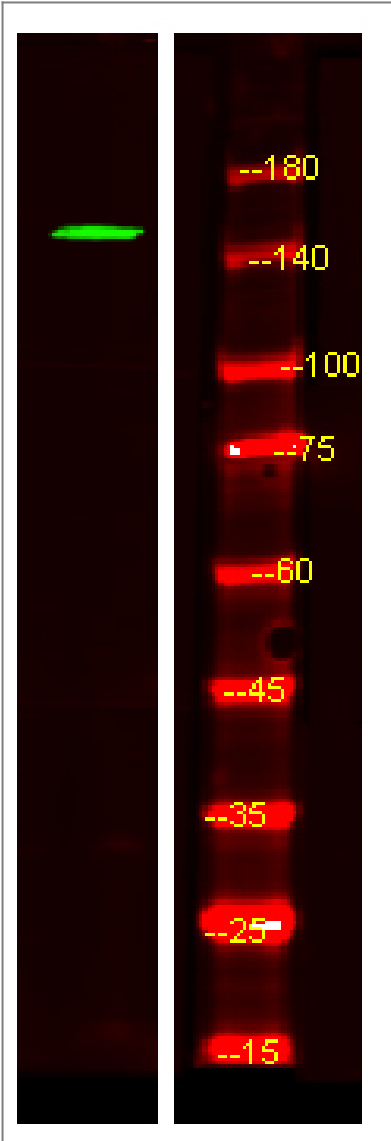
### Target Information

#### Gene name

CNTNAP4 CASPR4 KIAA1763

<b>Protein Name</b>	Contactin-associated protein-like 4 (Cell recognition molecule Caspr4)		
	<b>Organism</b>	<b>Gene ID</b>	<b>UniProt ID</b>
	Human	<a href="#">85445;</a>	<a href="#">Q9C0A0;</a>
	Mouse		<a href="#">Q99P47;</a>
<b>Cellular Localization</b>	Cell junction, synapse, presynaptic cell membrane ; Single-pass type I membrane protein . Specifically present within the presynaptic compartment of synapses. .		
<b>Tissue specificity</b>	Brain,Testis,		
<b>Function</b>	similarity:Belongs to the neurexin family.,similarity:Contains 1 F5/8 type C domain.,similarity:Contains 1 fibrinogen C-terminal domain.,similarity:Contains 2 EGF-like domains.,similarity:Contains 4 laminin G-like domains.,		

| Validation Data



Western Blot analysis of HEK293 lysis, using primary antibody at 1:1000 dilution. Secondary antibody(catalog#:RS23920) was diluted at 1:10000

## | Contact information

Orders: order@immunoway.com  
Support: tech@immunoway.com  
Telephone: 877-594-3616 (Toll Free), 408-747-0185  
Website: <http://www.immunoway.com>  
Address: 2200 Ringwood Ave San Jose, CA 95131 USA



Please scan the QR code  
to access additional  
product information:  
**CNTP4 Rabbit pAb**

---

For Research Use Only. Not for Use in Diagnostic Procedures.

[Antibody](#) | [ELISA Kits](#) | [Protein](#) | [Reagents](#)