

CHSTB Rabbit pAb

CatalogNo: YN0545

| Key Features

Host Species

- Rabbit

Reactivity

- Human, Mouse, Rat

Applications

- WB, ELISA

MW

- 38kD (Observed)

Isotype

- IgG

| Recommended Dilution Ratios

WB 1:500-2000

ELISA 1:5000-20000

| Storage

Storage* -15°C to -25°C/1 year (Do not lower than -25°C)

Formulation Liquid in PBS containing 50% glycerol, 0.5% BSA and 0.02% sodium azide.

| Basic Information

Clonality Polyclonal

| Immunogen Information

Immunogen Synthesized peptide derived from part region of human protein

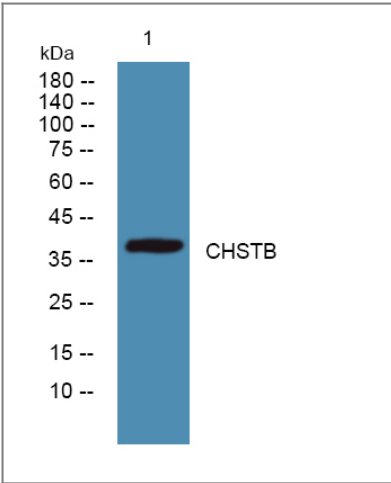
Specificity CHSTB Polyclonal Antibody detects endogenous levels of protein.

| Target Information

Gene name CHST11

Protein Name	Carbohydrate sulfotransferase 11 (Chondroitin 4-O-sulfotransferase 1) (Chondroitin 4-sulfotransferase 1) (C4S-1) (C4ST-1) (C4ST1)		
	Organism	Gene ID	UniProt ID
	Human	50515 ;	Q9NPF2 ;
	Mouse		Q9JME2 ;
	Rat		P69478 ;
Cellular Localization	Golgi apparatus membrane ; Single-pass type II membrane protein .		
Tissue specificity	Widely expressed. Highly expressed in spleen, thymus, bone marrow, peripheral blood leukocytes, lymph node, heart, brain, lung and placenta.		
Function	Catalytic activity:3'-phosphoadenylyl sulfate + chondroitin = adenosine 3',5'-bisphosphate + chondroitin 4'-sulfate.,Disease:A chromosomal aberration involving CHST11 is found in B-cell chronic lymphocytic leukemias. Translocation t(12;14)(q23;q32) with IgH.,Function:Catalyzes the transfer of sulfate to position 4 of the N-acetylgalactosamine (GalNAc) residue of chondroitin. Chondroitin sulfate constitutes the predominant proteoglycan present in cartilage and is distributed on the surfaces of many cells and extracellular matrices. Can also sulfate Gal residues in desulfated dermatan sulfate. Preferentially sulfates in GlcA->GalNAc unit than in IdoA->GalNAc unit. Does not form 4, 6-di-O-sulfated GalNAc when chondroitin sulfate C is used as an acceptor.,PTM:N-glycosylated; required for activity and stability.,similarity:Belongs to the sulfotransferase 2 family.,tissue specificity:Widely expressed. Highly expressed in spleen, thymus, bone marrow, peripheral blood leukocytes, lymph node, heart, brain, lung and placenta.,		

Validation Data



Western blot analysis of lysates from K562 cells, primary antibody was diluted at 1:1000, 4°over night

Contact information

Orders: order@immunoway.com
Support: tech@immunoway.com
Telephone: 877-594-3616 (Toll Free), 408-747-0185
Website: http://www.immunoway.com
Address: 2200 Ringwood Ave San Jose, CA 95131 USA



Please scan the QR code
to access additional
product information:
CHSTB Rabbit pAb

For Research Use Only. Not for Use in Diagnostic Procedures.

[Antibody](#) | [ELISA Kits](#) | [Protein](#) | [Reagents](#)