

## CPNS2 Rabbit pAb

CatalogNo: YN0536

### Key Features

**Host Species**

- Rabbit

**Reactivity**

- Human, Mouse

**Applications**

- WB, ELISA

**MW**

- 27kD (Observed)

**Isotype**

- IgG

### Storage

**Storage\*** -15°C to -25°C/1 year (Do not lower than -25°C)**Formulation** Liquid in PBS containing 50% glycerol, 0.5% BSA and 0.02% sodium azide.

### Recommended Dilution Ratios

**WB 1:500-2000****ELISA 1:5000-20000**

### Basic Information

**Clonality** Polyclonal

### Immunogen Information

**Immunogen** Synthesized peptide derived from part region of human protein**Specificity** CPNS2 Polyclonal Antibody detects endogenous levels of protein.

### Target Information

**Gene name** CAPNS2

**Protein Name** Calpain small subunit 2 (CSS2) (Calcium-dependent protease small subunit 2)

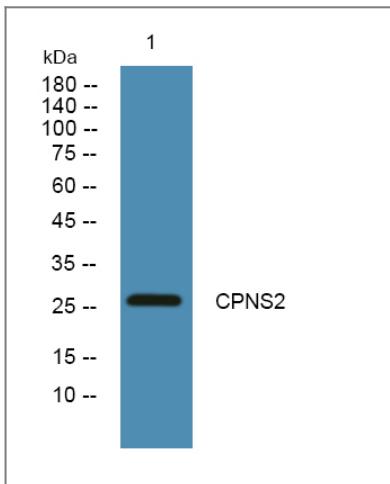
Organism	Gene ID	UniProt ID
Human	<a href="#">84290</a> ;	<a href="#">Q96L46</a> ;
Mouse		<a href="#">Q9D7J7</a> ;

**Cellular Localization** Cytoplasm . Cell membrane . Translocates to the plasma membrane upon calcium binding. .

**Tissue specificity** Urinary bladder carcinoma,

**Function** Function:Calcium-regulated non-lysosomal thiol-protease which catalyzes limited proteolysis of substrates involved in cytoskeletal remodeling and signal transduction. This small subunit may act as a tissue-specific chaperone of the large subunit, possibly by helping it fold into its correct conformation for activity.,similarity:Contains 4 EF-hand domains.,subcellular location:Translocates to the plasma membrane upon calcium binding.,subunit:Heterodimer of a large (catalytic) and a small (regulatory) subunit.,

## Validation Data



Western blot analysis of lysates from Jurkat cells, primary antibody was diluted at 1:1000, 4° over night

## Contact information

Orders: [order@immunoway.com](mailto:order@immunoway.com)  
Support: [tech@immunoway.com](mailto:tech@immunoway.com)  
Telephone: 877-594-3616 (Toll Free), 408-747-0185  
Website: <http://www.immunoway.com>  
Address: 2200 Ringwood Ave San Jose, CA 95131 USA



Please scan the QR code to access additional product information:  
**CPNS2 Rabbit pAb**

