

## B4GT4 Rabbit pAb

CatalogNo: YN0502

### Key Features

#### Host Species

- Rabbit

#### Reactivity

- Human, Mouse, Rat

#### Applications

- WB, ELISA

#### MW

- 37kD (Observed)

#### Isotype

- IgG

### Storage

**Storage\*** -15°C to -25°C/1 year (Do not lower than -25°C)

**Formulation** Liquid in PBS containing 50% glycerol, 0.5% BSA and 0.02% sodium azide.

### Recommended Dilution Ratios

**WB 1:500-2000**

**ELISA 1:5000-20000**

### Basic Information

**Clonality** Polyclonal

### Immunogen Information

**Immunogen** Synthesized peptide derived from part region of human protein

**Specificity** B4GT4 Polyclonal Antibody detects endogenous levels of protein.

### Target Information

**Gene name** B4GALT4 UNQ552/PRO1109

**Protein Name** Beta-1,4-galactosyltransferase 4 (Beta-1,4-GalTase 4) (Beta4Gal-T4) (b4Gal-T4) (UDP-Gal:beta-GlcNAc beta-1,4-galactosyltransferase 4) (UDP-galactose:beta-N-acetylgucosamine beta-1,4-galactosyltransferase 4) [Includes: N-acetyllactosamine synthase (Nal synthase); Lactotriaosylceramide beta-1,4-galactosyltransferase (Beta-N-acetylglucosaminyl-glycolipid beta-1,4-galactosyltransferase)]

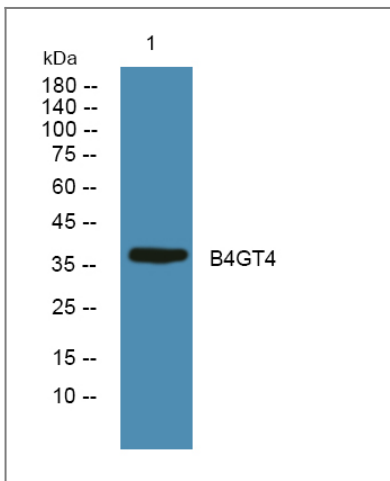
Organism	Gene ID	UniProt ID
Human	<a href="#">8702;</a>	<a href="#">O60513;</a>
Mouse		<a href="#">Q9JJ04;</a>
Rat		<a href="#">Q66HH1;</a>

**Cellular Localization** Golgi apparatus membrane ; Single-pass type II membrane protein . Secreted .

**Tissue specificity** Highest expression is observed in placenta, pancreas, kidney and heart (PubMed:9792633). Expressed in corneal epithelial cells (PubMed:17690104).

**Function** Catalytic activity:UDP-galactose + N-acetyl-D-glucosamine = UDP + N-acetyllactosamine.,cofactor:Manganese.,Function:Responsible for the synthesis of complex-type N-linked oligosaccharides in many glycoproteins as well as the carbohydrate moieties of glycolipids.,online information:Beta-1,4-galactosyltransferase 4,online information:GlycoGene database,pathway:Protein modification; protein glycosylation.,similarity:Belongs to the glycosyltransferase 7 family.,subcellular location:Trans cisternae of Golgi stack.,tissue specificity:High expression in heart, placenta, kidney and pancreas; lower in brain, colon, lung, muscle, ovary, testis and uterus.,

## Validation Data



Western blot analysis of lysates from U2OS cells, primary antibody was diluted at 1:1000, 4°C over night

## Contact information

Orders: order@immunoway.com  
Support: tech@immunoway.com  
Telephone: 877-594-3616 (Toll Free), 408-747-0185  
Website: http://www.immunoway.com  
Address: 2200 Ringwood Ave San Jose, CA 95131 USA



Please scan the QR code  
to access additional  
product information:  
**B4GT4 Rabbit pAb**

---

For Research Use Only. Not for Use in Diagnostic Procedures.

[Antibody](#) | [ELISA Kits](#) | [Protein](#) | [Reagents](#)