

## GALM Rabbit pAb

CatalogNo: YN0430

### Key Features

#### Host Species

- Rabbit

#### Reactivity

- Human, Mouse, Rat

#### Applications

- WB, ELISA

#### MW

- 37kD (Observed)

#### Isotype

- IgG

### Storage

**Storage\*** -15°C to -25°C/1 year (Do not lower than -25°C)

**Formulation** Liquid in PBS containing 50% glycerol, 0.5% BSA and 0.02% sodium azide.

### Recommended Dilution Ratios

**WB 1:500-2000**

**ELISA 1:5000-20000**

### Basic Information

**Clonality** Polyclonal

### Immunogen Information

**Immunogen** Synthesized peptide derived from human protein . at AA range: 40-120

**Specificity** GALM Polyclonal Antibody detects endogenous levels of protein.

### Target Information

**Gene name** GALM BLOCK25

**Protein Name** Aldose 1-epimerase (Galactose mutarotase)

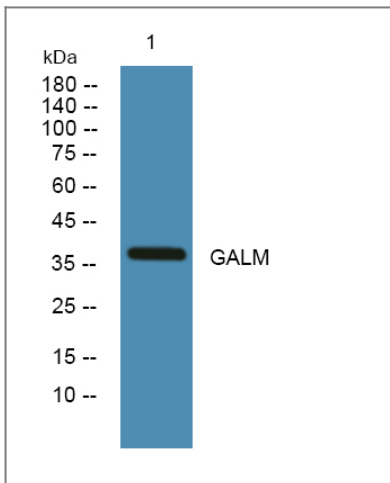
Organism	Gene ID	UniProt ID
Human	<a href="#">130589;</a>	<a href="#">Q96C23;</a>
Mouse		<a href="#">Q8K157;</a>
Rat		<a href="#">Q66HG4;</a>

**Cellular Localization** Cytoplasm .

**Tissue specificity** Brain,Hematopoietic,Ovary,Skin,

**Function** Catalytic activity:Alpha-D-glucose = beta-D-glucose.,Function:Mutarotase converts alpha-aldose to the beta-anomer. It is active on D-glucose, L-arabinose, D-xylose, D-galactose, maltose and lactose.,pathway:Carbohydrate metabolism; hexose metabolism.,similarity:Belongs to the aldose epimerase family.,subunit:Monomer.,

## Validation Data



Western blot analysis of lysates from K562 cells, primary antibody was diluted at 1:1000, 4° over night

## Contact information

Orders: [order@immunoway.com](mailto:order@immunoway.com)  
Support: [tech@immunoway.com](mailto:tech@immunoway.com)  
Telephone: 877-594-3616 (Toll Free), 408-747-0185  
Website: <http://www.immunoway.com>  
Address: 2200 Ringwood Ave San Jose, CA 95131 USA



Please scan the QR code to access additional product information:  
**GALM Rabbit pAb**

