

ADT2 Rabbit pAb

CatalogNo: YN0419

Key Features

Host Species

- Rabbit

Reactivity

- Human, Mouse, Rat

Applications

- WB, ELISA

MW

- 32kD (Observed)

Isotype

- IgG

Storage

Storage* -15°C to -25°C/1 year (Do not lower than -25°C)**Formulation** Liquid in PBS containing 50% glycerol, 0.5% BSA and 0.02% sodium azide.

Recommended Dilution Ratios

WB 1:500-2000**ELISA 1:5000-20000**

Basic Information

Clonality Polyclonal

Immunogen Information

Immunogen Synthesized peptide derived from human protein . at AA range: 40-120**Specificity** ADT2 Polyclonal Antibody detects endogenous levels of protein.

Target Information

Gene name SLC25A5 ANT2

Protein Name ADP/ATP translocase 2 (ADP,ATP carrier protein 2) (ADP,ATP carrier protein, fibroblast isoform) (Adenine nucleotide translocator 2) (ANT 2) (Solute carrier family 25 member 5)

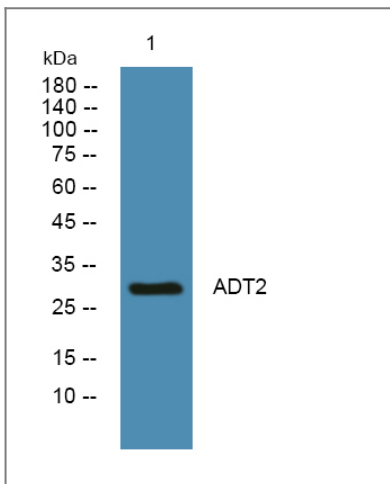
Organism	Gene ID	UniProt ID
Human	292;	P05141;
Mouse		P51881;
Rat		Q09073;

Cellular Localization Mitochondrion inner membrane ; Multi-pass membrane protein . Membrane ; Multi-pass membrane protein . May localize to non-mitochondrial membranes. .

Tissue specificity Expressed in erythrocytes (at protein level).

Function Function:Catalyzes the exchange of ADP and ATP across the mitochondrial inner membrane.,miscellaneous:The transmembrane helices are not perpendicular to the plane of the membrane, but cross the membrane at an angle. Odd-numbered transmembrane helices exhibit a sharp kink, due to the presence of a conserved proline residue.,similarity:Belongs to the mitochondrial carrier family.,similarity:Contains 3 Solcar repeats.,subunit:Homodimer. Interacts with HIV-1 Vpr.,

Validation Data



Western blot analysis of lysates from SH-SY5Y cells, primary antibody was diluted at 1:1000, 4° over night

Contact information

Orders: order@immunoway.com
Support: tech@immunoway.com
Telephone: 877-594-3616 (Toll Free), 408-747-0185
Website: <http://www.immunoway.com>
Address: 2200 Ringwood Ave San Jose, CA 95131 USA



Please scan the QR code to access additional product information:
ADT2 Rabbit pAb

