

## PGFRL Rabbit pAb

CatalogNo: YN0117

### Key Features

#### Host Species

- Rabbit

#### Reactivity

- Human, Mouse, Rat

#### Applications

- WB, ELISA

#### MW

- 41kD (Observed)

#### Isotype

- IgG

### Recommended Dilution Ratios

WB 1:500-2000

ELISA 1:5000-20000

### Storage

**Storage\*** -15°C to -25°C/1 year (Do not lower than -25°C)

**Formulation** Liquid in PBS containing 50% glycerol, 0.5% BSA and 0.02% sodium azide.

### Basic Information

**Clonality** Polyclonal

### Immunogen Information

**Immunogen** Synthesized peptide derived from human protein . at AA range: 50-130

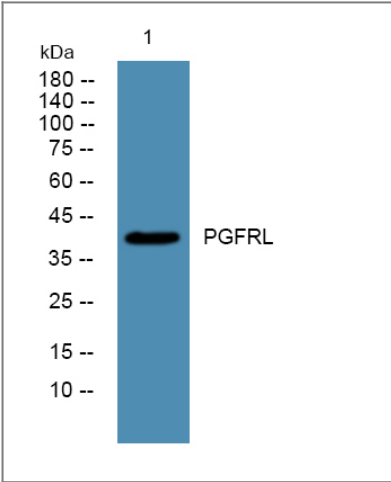
**Specificity** PGFRL Polyclonal Antibody detects endogenous levels of protein.

### Target Information

**Gene name** PDGFRL PRLTS

<b>Protein Name</b>	Platelet-derived growth factor receptor-like protein (PDGFR-like protein) (PDGF receptor beta-like tumor suppressor)		
	<b>Organism</b>	<b>Gene ID</b>	<b>UniProt ID</b>
	Human	<a href="#">5157;</a>	<a href="#">Q15198;</a>
	Mouse		<a href="#">Q6PE55;</a>
	Rat		<a href="#">Q5RJP7;</a>
<b>Cellular Localization</b>	Secreted .		
<b>Tissue specificity</b>	Expressed in colon, lung and liver.		
<b>Function</b>	Disease:Defects in PDGFRL are associated with colorectal cancer (CRC) [MIM:114500].,similarity:Contains 2 Ig-like C2-type (immunoglobulin-like) domains.,tissue specificity:Expressed in colon, lung and liver.,		

| Validation Data



Western blot analysis of lysates from SH-SY5Y cells, primary antibody was diluted at 1:1000, 4°over night

| Contact information

Orders: [order@immunoway.com](mailto:order@immunoway.com)  
 Support: [tech@immunoway.com](mailto:tech@immunoway.com)  
 Telephone: 877-594-3616 (Toll Free), 408-747-0185  
 Website: <http://www.immunoway.com>  
 Address: 2200 Ringwood Ave San Jose, CA 95131 USA



Please scan the QR code  
 to access additional  
 product information:  
**PGFRL Rabbit pAb**

