

UQCRC1 (PTR1435) Mouse mAb

CatalogNo: YM960178 **Recombinant** 

Key Features

Host Species

- Mouse

Reactivity

- Human, Mouse, Rat

Applications

- WB, IHC, IF, ELISA

MW

- 53kD (Calculated)
- 53kD (Observed)

Isotype

- Mouse IgG1/Kappa

Storage

Storage* -15°C to -25°C/1 year (Do not lower than -25°C)**Formulation** PBS, 50% glycerol, 0.05% Proclin 300, 0.05% BSA

Recommended Dilution Ratios

IHC 1:200-1:1000**WB 1:2000-1:10000****IF 1:200-1:1000****ELISA 1:5000-1:20000**

Basic Information

Clonality Monoclonal**Clone Number** PTR1435

Immunogen Information

Immunogen The specific immunogen used to produce this antibody is proprietary information.**Specificity** Endogenous

Target Information

Gene name UQCRC1

Protein Name QCR1

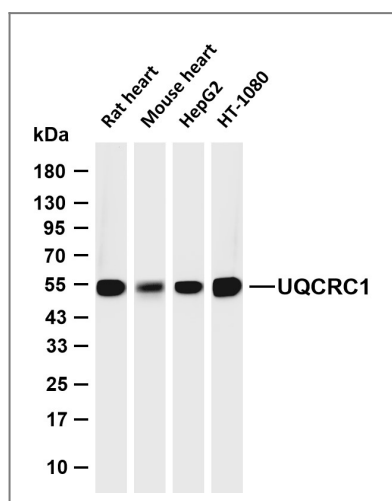
Organism	Gene ID	UniProt ID
Human	7384 ;	P31930 ;
Mouse	22273 ;	Q9CZ13 ;
Rat	301011 ;	Q68FY0 ;

Cellular Localization Mitochondrion inner membrane ; Peripheral membrane protein ; Matrix side .

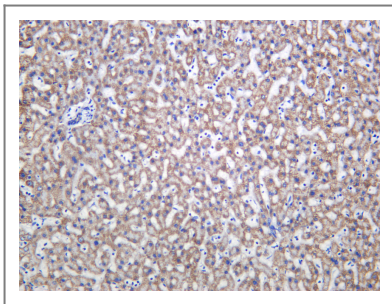
Tissue specificity Expressed in brain, including substantia nigra, striatum, cortex and cerebellum, and in spinal cord, heart, kidney, liver and muscle.

Function Caution:Does not seem to have a protease activity as it lack the zinc-binding site.,Function:This is a component of the ubiquinol-cytochrome c reductase complex (complex III or cytochrome b-c1 complex), which is part of the mitochondrial respiratory chain. This protein may mediate formation of the complex between cytochromes c and c1.,similarity:Belongs to the peptidase M16 family. UQCRC1/QCR1 subfamily.,subunit:The bc1 complex contains 11 subunits: 3 respiratory subunits (cytochrome b, cytochrome c1 and Rieske/UQCRFS1), 2 core proteins (UQCRC1/QCR1 and UQCRC2/QCR2) and 6 low-molecular weight proteins (UQCRH/QCR6, UQCRB/QCR7, UQCRQ/QCR8, UQCR10/QCR9, UQCR11/QCR10 and a cleavage product of Rieske/UQCRFS1),.

Validation Data



Various whole cell lysates were separated by 4-20% SDS-PAGE, and the membrane was blotted with anti-UQCRC1 (PTR1435) antibody. The HRP-conjugated Goat anti-Mouse IgG (H + L) antibody was used to detect the antibody. Lane 1: Rat heart Lane 2: Mouse heart Lane 3: HepG2 Lane 4: HT-1080 Predicted band size: 53kDa Observed band size: 53kDa



Human liver was stained with anti-UQCRC1 (PTR1435) Mouse mAb

| Contact information

Orders: order@immunoway.com
Support: tech@immunoway.com
Telephone: 877-594-3616 (Toll Free), 408-747-0185
Website: <http://www.immunoway.com>
Address: 2200 Ringwood Ave San Jose, CA 95131 USA



Please scan the QR code to access additional product information:
UQCRC1 (PTR1435)
Mouse mAb

For Research Use Only. Not for Use in Diagnostic Procedures.

[Antibody](#) | [ELISA Kits](#) | [Protein](#) | [Reagents](#)