

PI 3-Kinase p110 δ (PT1732R) PT™ Rabbit mAb

CatalogNo: YM9574 **Recombinant** 

Key Features

Host Species

- Rabbit

Reactivity

- Human, Mouse, Rat

Applications

- WB, IHC, IF, ELISA

MW

- 119kD (Calculated)
- 119kD (Observed)

Isotype

- IgG, Kappa

Storage

Storage* -15°C to -25°C/1 year (Do not lower than -25°C)**Formulation** PBS, 50% glycerol, 0.05% Proclin 300, 0.05% BSA

Recommended Dilution Ratios

IHC 1:200-1:1000**WB 1:2000-1:10000****IF 1:200-1:1000****ELISA 1:5000-1:20000**

Basic Information

Clonality Monoclonal**Clone Number** PT1732R

Immunogen Information

Specificity Endogenous

Target Information

Gene name PIK3CD

Protein Name Phosphatidylinositol 4,5-bisphosphate 3-kinase catalytic subunit delta isoform

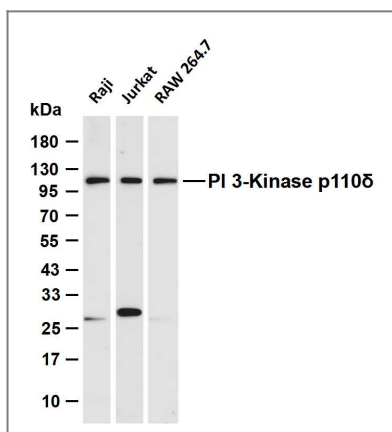
Organism	Gene ID	UniProt ID
Human	5293 ;	O00329 ;
Mouse	18707 ;	O35904 ;

Cellular Localization Cytoplasm .

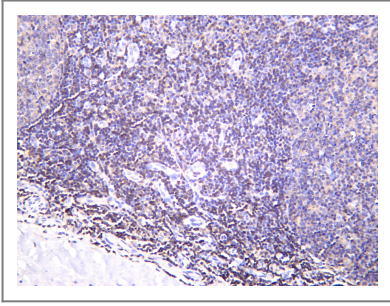
Tissue specificity In humans, the highest levels of expression are seen in peripheral blood mononuclear cells, spleen, and thymus, and low levels of expression in testes, uterus, colon, and small intestine but not in other tissues examined including prostate, heart, brain, and liver (PubMed:9235916). Isoform 2 is expressed in normal thymus, lung and spleen tissues, and is detected at low levels in normal lysates from colon and ovarian biopsies, at elevated levels in lysates from colorectal tumors and is abundantly expressed in some ovarian tumors (at protein level). Both isoform 1 and isoform 2 are widely expressed. Isoform 1 is expressed predominantly in leukocytes.

Function Catalytic activity:ATP + 1-phosphatidyl-1D-myo-inositol 4,5-bisphosphate = ADP + 1-phosphatidyl-1D-myo-inositol 3,4,5-trisphosphate.,pathway:Phospholipid metabolism; phosphatidylinositol phosphate biosynthesis.,PTM:Autophosphorylation on Ser-1039 results in the almost complete inactivation of the lipid kinase activity.,similarity:Belongs to the PI3/PI4-kinase family.,similarity:Contains 1 PI3K/PI4K domain.,subunit:Heterodimer of a p110 (catalytic) and a p85 (regulatory) subunit. Interacts with ERAS.,tissue specificity:Expressed predominantly in leukocytes.,

Validation Data



Various whole cell lysates were separated by 4-20% SDS-PAGE, and the membrane was blotted with anti-PI 3-Kinase p110δ (PT1732R) antibody. The HRP-conjugated Goat anti-Rabbit IgG (H + L) antibody was used to detect the antibody. Lane 1: Raji Lane 2: Jurkat Lane 3: RAW264.7 Predicted band size: 119kDa Observed band size: 119kDa



Human tonsil was stained with anti-PI 3-Kinase p1106 (PT1732R) Rabbit antibody

Contact information

Orders: order@immunoway.com
Support: tech@immunoway.com
Telephone: 877-594-3616 (Toll Free), 408-747-0185
Website: <http://www.immunoway.com>
Address: 2200 Ringwood Ave San Jose, CA 95131 USA



Please scan the QR code to access additional product information:
PI 3-Kinase p1106 (PT1732R) PT™ Rabbit mAb

For Research Use Only. Not for Use in Diagnostic Procedures.

[Antibody](#) | [ELISA Kits](#) | [Protein](#) | [Reagents](#)