

Pan-TEF (PT1594R) PT™ Rabbit mAb

CatalogNo: YM9436 **Recombinant** 

Key Features

Host Species

- Rabbit

Reactivity

- Human, Mouse, Rat

Applications

- WB, IHC, IF, IP, ELISA

MW

- 48kD (Calculated)
- 56kD (Observed)

Isotype

- IgG, Kappa

Storage

Storage* -15°C to -25°C/1 year (Do not lower than -25°C)**Formulation** PBS, 50% glycerol, 0.05% Proclin 300, 0.05% BSA

Recommended Dilution Ratios

IHC 1:200-1:1000**WB 1:10000-1:50000****IF 1:200-1:1000****ELISA 1:5000-1:20000****IP 1:50-1:200**

Basic Information

Clonality Monoclonal**Clone Number** PT1594R

Immunogen Information

Specificity Endogenous

Target Information

Gene name TEAD1/2/3/4

Protein Name Transcriptional enhancer factor TEF-1/3/4/5

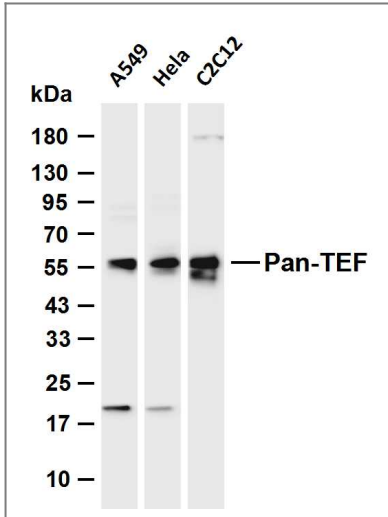
| Organism | Gene ID | UniProt ID |
|----------|---|---|
| Human | 8463 ; 7003 ; 7004 ; 7005 ; | Q15562 ; P28347 ; Q15561 ; Q99594 ; |
| Mouse | 21676 ; 21677 ; 21678 ; 21679 ; | P48301 ; P30051 ; Q62296 ; P70210 ; |

Cellular Localization Nucleus.

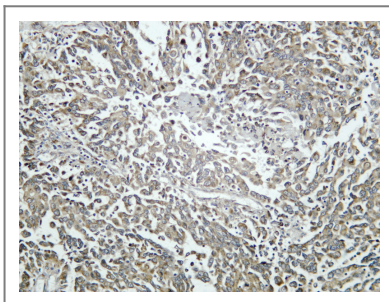
Tissue specificity Brain, Eye, Skin, Testis,

Function Function: Putative transcription factor that binds to the SPH and GT-IIC "enhancers" (5'-GTGGAATGT-3'). May be involved in the gene regulation of neural development. Binds to the M-CAT motif., similarity: Contains 1 TEA DNA-binding domain.,

Validation Data



Various whole cell lysates were separated by 4-20% SDS-PAGE, and the membrane was blotted with anti-Pan-TEF (PT1594R) antibody. The HRP-conjugated Goat anti-Rabbit IgG (H + L) antibody was used to detect the antibody. Lane 1: A549 Lane 2: HeLa Lane 3: C2C12 Predicted band size: 48kDa Observed band size: 56kDa



Human malignant mesothelioma was stained with anti-Pan-TEF (PT1594R) Rabbit antibody

| Contact information

Orders: order@immunoway.com
Support: tech@immunoway.com
Telephone: 877-594-3616 (Toll Free), 408-747-0185
Website: <http://www.immunoway.com>
Address: 2200 Ringwood Ave San Jose, CA 95131 USA



Please scan the QR code to access additional product information:
Pan-TEF (PT1594R)
PT™ Rabbit mAb

For Research Use Only. Not for Use in Diagnostic Procedures.

[Antibody](#) | [ELISA Kits](#) | [Protein](#) | [Reagents](#)