

# ROR $\gamma$ (PT1506R) PT™ Rabbit mAb

CatalogNo: YM9348 **Recombinant** 

## Key Features

### Host Species

- Rabbit

### Reactivity

- Mouse

### Applications

- WB,IHC,IF,IP,ELISA

### MW

- 58kD (Calculated)
- 58kD (Observed)

### Isotype

- IgG,Kappa

## Storage

**Storage\*** -15°C to -25°C/1 year(Do not lower than -25°C)**Formulation** PBS, 50% glycerol, 0.05% Proclin 300, 0.05%BSA

## Recommended Dilution Ratios

**IHC 1:200-1:1000****WB 1:2000-1:10000****IF 1:200-1:1000****ELISA 1:5000-1:20000****IP 1:50-1:200**

## Basic Information

**Clonality** Monoclonal**Clone Number** PT1506R

## Immunogen Information

**Specificity** Endogenous

## Target Information

**Gene name** RORC

**Protein Name** Nuclear receptor ROR-gamma

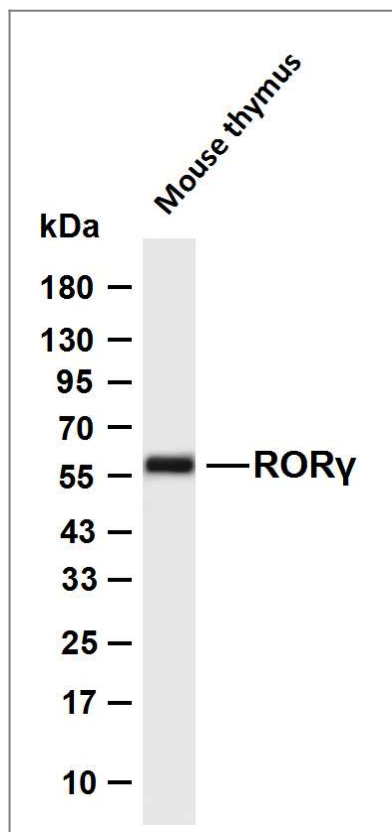
Organism	Gene ID	UniProt ID
Human	<a href="#">6097;</a>	<a href="#">P51449;</a>
Mouse	<a href="#">19885;</a>	<a href="#">P51450;</a>

**Cellular Localization** Nucleus .

**Tissue specificity** Isoform 1 is widely expressed in many tissues, including liver and adipose, and highly expressed in skeletal muscle. Isoform 2 is primarily expressed in immature thymocytes.

**Function** Function:Orphan nuclear receptor.,similarity:Belongs to the nuclear hormone receptor family.,similarity:Belongs to the nuclear hormone receptor family. NR1 subfamily.,similarity:Contains 1 nuclear receptor DNA-binding domain.,tissue specificity:Highly expressed in skeletal muscle.,

## Validation Data



Various whole cell lysates were separated by 4-20% SDS-PAGE, and the membrane was blotted with anti-ROR $\gamma$  (PT1506R) antibody. The HRP-conjugated Goat anti-Rabbit IgG (H + L) antibody was used to detect the antibody. Lane 1: Mouse thymus Predicted band size: 58kDa Observed band size: 58kDa

## | Contact information

Orders: order@immunoway.com  
Support: tech@immunoway.com  
Telephone: 877-594-3616 (Toll Free), 408-747-0185  
Website: <http://www.immunoway.com>  
Address: 2200 Ringwood Ave San Jose, CA 95131 USA



Please scan the QR code  
to access additional  
product information:  
**ROR $\gamma$  (PT1506R)**  
**PT™ Rabbit mAb**

---

For Research Use Only. Not for Use in Diagnostic Procedures.

[Antibody](#) | [ELISA Kits](#) | [Protein](#) | [Reagents](#)