

Phospho-Serine/Threonine (PT1457R) PT™ Rabbit mAb

CatalogNo: YM9299 **Recombinant** 

Key Features

Host Species

- Rabbit

Reactivity

- Species independent

Applications

- WB,IF,ELISA

MW

- 20-200kD (Observed)

Isotype

- IgG,Kappa

Storage

Storage* -15°C to -25°C/1 year(Do not lower than -25°C)**Formulation** PBS, 50% glycerol, 0.05% Proclin 300, 0.05%BSA

Recommended Dilution Ratios

WB 1:2000-1:10000**IF 1:200-1:1000****ELISA 1:5000-1:20000**

Basic Information

Clonality Monoclonal**Clone Number** PT1457R

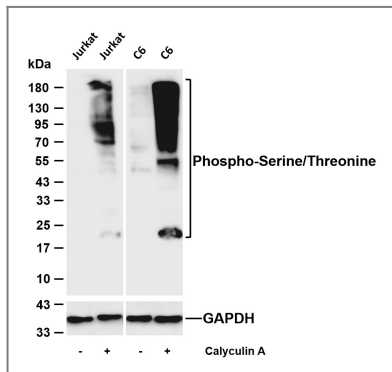
Immunogen Information

Immunogen The specific immunogen used to produce this antibody is proprietary information.**Specificity** Endogenous

Target Information

Protein Name

Validation Data



Various whole cell lysates were separated by 4-20% SDS-PAGE, and the membrane was blotted with anti-Phospho-Serine/Threonine (PT1457R) antibody. The HRP-conjugated Goat anti-Rabbit IgG (H + L) antibody was used to detect the antibody. Lane 1: Jurkat Lane 2: Jurkat was treated with Calyculin A (0.1 μ M for 45 minutes Lane 3: C6 Lane 4: C6 was treated with Calyculin A (100ng/mL) for 30 minutes Observed band size: 20-200kDa

Contact information

Orders: order@immunoway.com
Support: tech@immunoway.com
Telephone: 877-594-3616 (Toll Free), 408-747-0185
Website: <http://www.immunoway.com>
Address: 2200 Ringwood Ave San Jose, CA 95131 USA



Please scan the QR code to access additional product information:

Phospho-Serine/Threonine (PT1457R) PT™ Rabbit mAb

For Research Use Only. Not for Use in Diagnostic Procedures.

[Antibody](#) | [ELISA Kits](#) | [Protein](#) | [Reagents](#)