

JAB1 (PT1332R) PT™ Rabbit mAb

CatalogNo: YM9174 **Recombinant** 

Key Features

Host Species

- Rabbit

Reactivity

- Human, Mouse, Rat

Applications

- WB, IHC, IF, IP, ELISA

MW

- 38kD (Calculated)
- 38kD (Observed)

Isotype

- IgG, Kappa

Recommended Dilution Ratios

IHC 1:200-1:1000

WB 1:2000-1:10000

IF 1:200-1:1000

ELISA 1:5000-1:20000

IP 1:50-1:200

Storage

Storage* -15°C to -25°C/1 year (Do not lower than -25°C)

Formulation PBS, 50% glycerol, 0.05% Proclin 300, 0.05% BSA

Basic Information

Clonality Monoclonal

Clone Number PT1332R

Immunogen Information

Specificity Endogenous

| Target Information

Gene name COPS5

Protein Name COP9 signalosome complex subunit 5

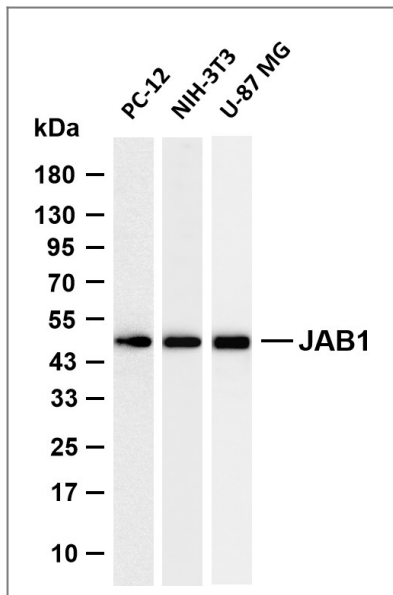
Organism	Gene ID	UniProt ID
Human	10987 ;	Q92905 ;
Mouse	26754 ;	Q35864 ;

Cellular Localization Cytoplasm, cytosol . Nucleus . Cytoplasm, perinuclear region . Cytoplasmic vesicle, secretory vesicle, synaptic vesicle . Nuclear localization is diminished in the presence of IFIT3. .

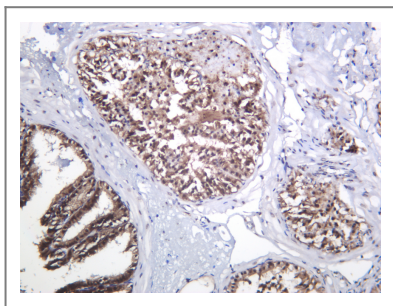
Tissue specificity Brain,Cervix carcinoma,Eye,Liver,Muscle,

Function cofactor:Divalent metal ions.,Domain:The JAMM motif is essential for the protease activity of the CSN complex resulting in deneddylation of cullins. It constitutes the catalytic center of the complex.,Function:Probable protease subunit of the COP9 signalosome complex (CSN), a complex involved in various cellular and developmental processes. The CSN complex is an essential regulator of the ubiquitin (Ubl) conjugation pathway by mediating the deneddylation of the cullin subunits of the SCF-type E3 ligase complexes, leading to decrease the Ubl ligase activity of SCF-type complexes such as SCF, CSA or DDB2. The complex is also involved in phosphorylation of p53/TP53, c-jun/JUN, IkappaBalpha/NFKBIA, ITPK1 and ICSBP, possibly via its association with CK2 and PKD kinases. CSN-dependent phosphorylation of TP53 and JUN promotes and protects degradation by the Ubl system, respectively. In the complex, it probably acts as the catalytic center that mediates the cleavage of Nedd8 from cullins. It however has no metalloprotease activity by itself and requires the other subunits of the CSN complex. Interacts directly with a large number of proteins that are regulated by the CSN complex, confirming a key role in the complex.,miscellaneous:The CSN complex is associated with some 'Lys-63'-specific deubiquitination. Such activity is however not mediated by the core CSN complex but by the BRCC3/BRCC36 component of the BRISC complex.,similarity:Belongs to the peptidase M67A family. CSN5 subfamily.,similarity:Contains 1 MPN (JAB/Mov34) domain.,subunit:Component of the CSN complex, composed of COPS1/GPS1, COPS2, COPS3, COPS4, COPS5, COP6, COPS7 (COPS7A or COPS7B) and COPS8. In the complex, it probably interacts directly with COPS1, COPS2, COPS4, COPS6 and COPS7 (COPS7A or COPS7B). The CSN complex interacts with the BRISC complex. Also exists as monomeric form. Interacts with TP53, MIF, JUN, UCHL1, NCOA1, HIF1A, CDKN1B, BCL3, GFER, PGR, LHCGR, SMAD4, SMAD7, ID1, ID3, ITGB2 and TOP2A. Part of a complex consisting of RANBP9, Ran, DYRK1B and COPS5.,

| Validation Data



Various whole cell lysates were separated by 4-20% SDS-PAGE, and the membrane was blotted with anti-JAB1 (PT1332R) antibody. The HRP-conjugated Goat anti-Rabbit IgG (H + L) antibody was used to detect the antibody. Lane 1: PC-12 Lane 2: NIH-3T3 Lane 3: U-87 MG Predicted band size: 38kDa Observed band size: 38kDa



Mouse prostate was stained with anti-JAB1 (PT1332R) Rabbit antibody

Contact information

Orders: order@immunoway.com
 Support: tech@immunoway.com
 Telephone: 877-594-3616 (Toll Free), 408-747-0185
 Website: <http://www.immunoway.com>
 Address: 2200 Ringwood Ave San Jose, CA 95131 USA



Please scan the QR code to access additional product information:
JAB1 (PT1332R) PT™
Rabbit mAb

For Research Use Only. Not for Use in Diagnostic Procedures.

[Antibody](#) | [ELISA Kits](#) | [Protein](#) | [Reagents](#)