

PDK1 (PT1266R) PT™ Rabbit mAb

CatalogNo: YM9108 **Recombinant** 

Key Features

Host Species

- Rabbit

Reactivity

- Human, Mouse, Rat

Applications

- WB, IF, IP, ELISA

MW

- 49kD (Calculated)
- 49kD (Observed)

Isotype

- IgG, Kappa

Recommended Dilution Ratios

WB 1:2000-1:10000

IF 1:200-1:1000

ELISA 1:5000-1:20000

IP 1:50-1:200

Storage

Storage* -15°C to -25°C/1 year (Do not lower than -25°C)

Formulation PBS, 50% glycerol, 0.05% Proclin 300, 0.05% BSA

Basic Information

Clonality Monoclonal

Clone Number PT1266R

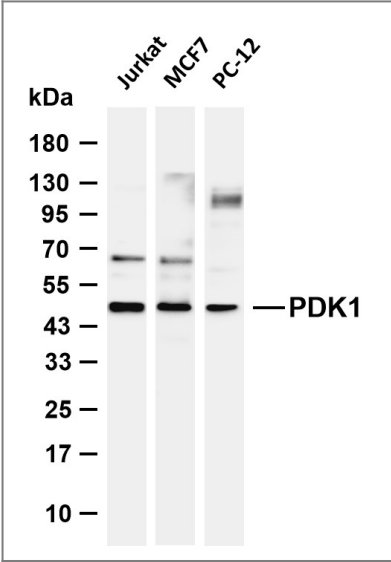
Immunogen Information

Specificity Endogenous

Target Information

Gene name	PDK1		
Protein Name	[Pyruvate dehydrogenase [lipoamide]] kinase isozyme 1 mitochondrial		
	Organism	Gene ID	UniProt ID
	Human	5163 ;	Q15118 ;
	Mouse	228026 ;	Q8BFP9 ;
	Rat		Q63065 ;
Cellular Localization	Mitochondrion matrix .		
Tissue specificity	Expressed predominantly in the heart. Detected at lower levels in liver, skeletal muscle and pancreas.		
Function	Catalytic activity:ATP + [pyruvate dehydrogenase (acetyl-transferring)] = ADP + [pyruvate dehydrogenase (acetyl-transferring)] phosphate.,Function:Inhibits the mitochondrial pyruvate dehydrogenase complex by phosphorylation of the E1 alpha subunit, thus contributing to the regulation of glucose metabolism.,similarity:Belongs to the PDK/BCKDK protein kinase family.,similarity:Contains 1 histidine kinase domain.,tissue specificity:Expressed predominantly in the heart.,		

Validation Data



Various whole cell lysates were separated by 4-20% SDS-PAGE, and the membrane was blotted with anti-PDK1 (PT1266R) antibody. The HRP-conjugated Goat anti-Rabbit IgG (H + L) antibody was used to detect the antibody. Lane 1: Jurkat Lane 2: MCF7 Lane 3: PC-12 Predicted band size: 49kDa Observed band size: 49kDa

Contact information

Orders: order@immunoway.com
Support: tech@immunoway.com
Telephone: 877-594-3616 (Toll Free), 408-747-0185
Website: http://www.immunoway.com
Address: 2200 Ringwood Ave San Jose, CA 95131 USA



Please scan the QR code
to access additional
product information:
PDK1 (PT1266R)
PT™ Rabbit mAb

For Research Use Only. Not for Use in Diagnostic Procedures.

[Antibody](#) | [ELISA Kits](#) | [Protein](#) | [Reagents](#)