

SMCA5 (PT1257R) PT™ Rabbit mAb

CatalogNo: YM9099 **Recombinant** 

Key Features

Host Species

- Rabbit

Reactivity

- Human, Mouse, Rat

Applications

- WB, IF, ELISA

MW

- 122kD (Calculated)
122kD (Observed)

Isotype

- IgG, Kappa

Recommended Dilution Ratios

WB 1:2000-1:10000

IF 1:200-1:1000

ELISA 1:5000-1:20000

Storage

Storage* -15°C to -25°C/1 year (Do not lower than -25°C)

Formulation PBS, 50% glycerol, 0.05% Proclin 300, 0.05% BSA

Basic Information

Clonality Monoclonal

Clone Number PT1257R

Immunogen Information

Specificity Endogenous

Target Information

Gene name SMARCA5 SNF2H WCRF135

Protein Name SMCA5

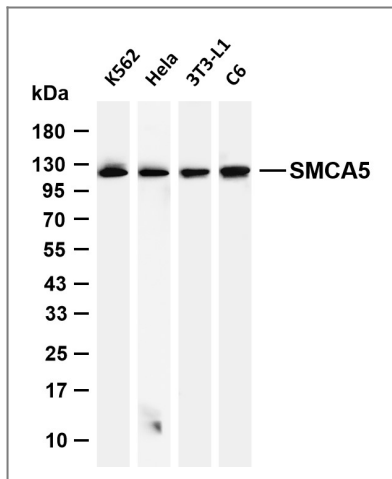
Organism	Gene ID	UniProt ID
Human	8467 ;	O60264 ;
Mouse	93762 ;	Q91ZW3 ;

Cellular Localization Nucleus . Chromosome . Localizes to mitotic chromosomes (PubMed:12972596). Co-localizes with RSF1 in the nucleus (PubMed:12972596). Co-localizes with PCNA at replication foci during S phase (PubMed:15543136). Co-localizes with BAZ1B/WSTF at replication foci during late-S phase (PubMed:15543136). Recruited to DNA damage sites following interaction with SIRT6 (PubMed:23911928). .

Tissue specificity Ubiquitously expressed.

Function developmental stage:Overexpressed in CD34-positive erythrocyte progenitor cells in acute myeloid leukemia. Down-regulation correlates with hematologic remission following chemotherapy.,Function:Helicase that possesses intrinsic ATP-dependent nucleosome-remodeling activity. Complexes containing SMARCA5 are capable of forming ordered nucleosome arrays on chromatin; this may require intact histone H4 tails. Also required for replication of pericentric heterochromatin in S-phase specifically in conjunction with BAZ1A. Probably plays a role in repression of polI dependent transcription of the rDNA locus, through the recruitment of the SIN3/HDAC1 corepressor complex to the rDNA promoter. Essential component of the WICH complex, a chromatin remodeling complex that mobilizes nucleosomes and reconfigures irregular chromatin to a regular nucleosomal array structure. The WICH complex regulates the transcription of various genes, has a role in RNA polymerase I and RNA polymerase III transcription, mediates the histone H2AX phosphorylation at 'Tyr-142', and is involved in the maintenance of chromatin structures during DNA replication processes.,similarity:Belongs to the SNF2/RAD54 helicase family. ISWI subfamily.,similarity:Contains 1 helicase ATP-binding domain.,similarity:Contains 1 helicase C-terminal domain.,similarity:Contains 2 SANT domains.,subunit:Catalytic subunit of the four known chromatin-remodeling complexes: CHRAC, RSF, ACF/WCRF, and WICH. Each complex contains subunits which may regulate the specificity or catalytic activity of SMARCA5. ACF/WCRF contains BAZ1A; CHRAC contains BAZ1A, CHRAC1, and POLE3; RSF contains RSF1; WICH contains BAZ1B/WSTF. SMARCA5 is the catalytic subunit of the NoRC chromatin-remodeling complex, which also contains BAZ2A and of SMARCA5/cohesin/NuRD complexes. The BAZ2A subunit of NoRC also interacts with DNMT1, DNMT3B and HDAC1, which allows NoRC to actively suppress rDNA transcription by a combination of nucleosome remodeling, histone deacetylation, and DNA methylation Component of the B-WICH complex, at least composed of SMARCA5/SNF2H, BAZ1B/WSTF, SF3B1, DEK, MYO1C, ERCC6, MYBBP1A and DDX21. Interacts with MYO1C.,tissue specificity:Ubiquitously expressed.,

Validation Data



Various whole cell lysates were separated by 4-20% SDS-PAGE, and the membrane was blotted with anti-SMCA5 (PT1257R) antibody. The HRP-conjugated Goat anti-Rabbit IgG (H + L) antibody was used to detect the antibody. Lane 1: K562 Lane 2: HeLa Lane 3: 3T3-L1 Lane 4: C6 Predicted band size: 122kDa Observed band size: 122kDa

Contact information

Orders: order@immunoway.com
 Support: tech@immunoway.com
 Telephone: 877-594-3616 (Toll Free), 408-747-0185
 Website: <http://www.immunoway.com>
 Address: 2200 Ringwood Ave San Jose, CA 95131 USA



Please scan the QR code to access additional product information:
SMCA5 (PT1257R)
PT™ Rabbit mAb

For Research Use Only. Not for Use in Diagnostic Procedures.

[Antibody](#) | [ELISA Kits](#) | [Protein](#) | [Reagents](#)