

SMARCC1 (PT1242R) PT™ Rabbit mAb

CatalogNo: YM9084 **Recombinant** 

Key Features

Host Species

- Rabbit

Reactivity

- Human, Mouse, Rat

Applications

- WB, IHC, IF, IP, ELISA

MW

- 123kD (Calculated)
- 155kD (Observed)

Isotype

- IgG, Kappa

Recommended Dilution Ratios

IHC 1:200-1:1000

WB 1:2000-1:10000

IF 1:200-1:1000

ELISA 1:5000-1:20000

IP 1:50-1:200

Storage

Storage* -15°C to -25°C/1 year (Do not lower than -25°C)

Formulation PBS, 50% glycerol, 0.05% Proclin 300, 0.05% BSA

Basic Information

Clonality Monoclonal

Clone Number PT1242R

Immunogen Information

Specificity Endogenous

| Target Information

Gene name baf155

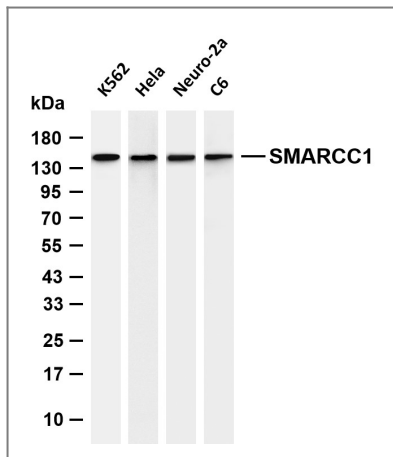
Protein Name	Organism	Gene ID	UniProt ID
	Human	6599 ;	Q92922 ;
	Mouse		P97496 ;

Cellular Localization Nucleus . Cytoplasm .

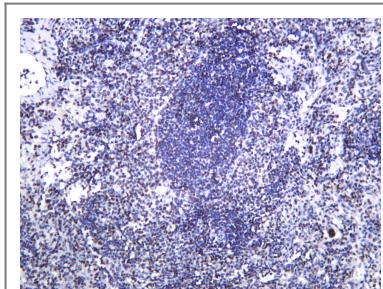
Tissue specificity Expressed in brain, heart, muscle, placenta, lung, liver, muscle, kidney and pancreas.

Function Function:Involved in transcriptional activation and repression of select genes by chromatin remodeling (alteration of DNA-nucleosome topology). May stimulate the ATPase activity of the catalytic subunit of the complex. Also involved in vitamin D-coupled transcription regulation via its association with the WINAC complex, a chromatin-remodeling complex recruited by vitamin D receptor (VDR), which is required for the ligand-bound VDR-mediated transrepression of the CYP27B1 gene.,PTM:Phosphorylated on undefined residues at the G2/M transition by ERK1 and other kinases. This may contribute to cell cycle specific inactivation of remodeling complexes containing the phosphorylated protein.,sequence Caution:Contaminating sequence. Potential poly-A sequence.,similarity:Belongs to the SMARCC family.,similarity:Contains 1 SANT domain.,similarity:Contains 1 SWIRM domain.,subunit:Component of 6 multiprotein chromatin-remodeling complexes: Swi/Snf-A (BAF), Swi/Snf-B (PBAF), Brm, Brg1(I), WINAC and Brg1(II). Each of the five complexes contains a catalytic subunit (either SMARCA4 or SMARCA2), and at least SMARCE1, ACTL6A/BAF53A or ACTL6B/BAF53B, SMARCC2 and SMARCB1. Other subunits specific to each of the complexes may also be present. Component of the BAF complex, which includes at least actin (ACTB), ARID1A, ARID1B/BAF250, SMARCA2, SMARCA4/BRG1, ACTL6A/BAF53, ACTL6B/BAF53B, SMARCE1/BAF57, SMARCC1/BAF155, SMARCC2/BAF170, SMARCB1/SNF5/INI1, and one or more of SMARCD1/BAF60A, SMARCD2/BAF60B, or SMARCD3/BAF60C. In muscle cells, the BAF complex also contains DPF3. May also interact with the SIN3A histone deacetylase transcription repressor complex in conjunction with SMARCA2 and SMARCA4. The minimal complex composed of SMARCC1 and SMARCA4 seems to be able to associate with cyclin such as CCNE1 or transcription factors such as KLF1 or GATA1. Component of the WINAC complex, at least composed of SMARCA2, SMARCA4, SMARCB1, SMARCC1, SMARCC2, SMARCD1, SMARCE1, ACTL6A, BAZ1B/WSTF, ARID1A, SUPT16H, CHAF1A and TOP2B. Interacts with NR3C1 and SMARD1.,tissue specificity:Expressed in brain, heart, muscle, placenta, lung, liver, muscle, kidney and pancreas.,

| Validation Data



Various whole cell lysates were separated by 4-20% SDS-PAGE, and the membrane was blotted with anti-SMARCC1 (PT1242R) antibody. The HRP-conjugated Goat anti-Rabbit IgG (H + L) antibody was used to detect the antibody. Lane 1: K562 Lane 2: HeLa Lane 3: Neuro-2a Lane 4: C6 Predicted band size: 123kDa Observed band size: 155kDa



Rat spleen was stained with anti-SMARCC1 (PT1242R) Rabbit antibody

Contact information

Orders: order@immunoway.com
 Support: tech@immunoway.com
 Telephone: 877-594-3616 (Toll Free), 408-747-0185
 Website: <http://www.immunoway.com>
 Address: 2200 Ringwood Ave San Jose, CA 95131 USA



Please scan the QR code to access additional product information:

**SMARCC1
(PT1242R) PT™
Rabbit mAb**

For Research Use Only. Not for Use in Diagnostic Procedures.

[Antibody](#) | [ELISA Kits](#) | [Protein](#) | [Reagents](#)