

SNAP 25 (PT1199R) PT™ Rabbit mAb

CatalogNo: YM9041 **Recombinant** 

Key Features

Host Species

- Rabbit

Reactivity

- Human, Mouse, Rat

Applications

- WB, IHC, IF, IP, ELISA

MW

- 23kD (Calculated)
- 25kD (Observed)

Isotype

- IgG, Kappa

Recommended Dilution Ratios

IHC 1:200-1:1000**WB 1:2000-1:10000****IF 1:200-1:1000****ELISA 1:5000-1:20000****IP 1:50-1:200**

Storage

Storage* -15°C to -25°C/1 year (Do not lower than -25°C)**Formulation** PBS, 50% glycerol, 0.05% Proclin 300, 0.05% BSA

Basic Information

Clonality Monoclonal**Clone Number** PT1199R

Immunogen Information

Specificity Endogenous

| Target Information

Gene name SNAP-25

Protein Name Synaptosomal-associated protein 25

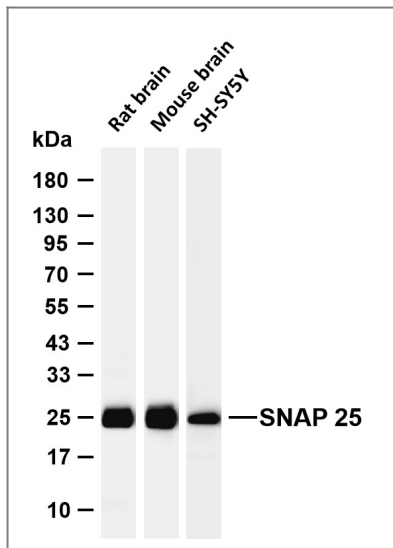
Organism	Gene ID	UniProt ID
Human	6616 ;	P60880 ;
Mouse	20614 ;	P60879 ;
Rat	25012 ;	P60881 ;

Cellular Localization Cytoplasm, perinuclear region . Cell membrane ; Lipid-anchor . Cell junction, synapse, synaptosome . Photoreceptor inner segment . Membrane association requires palmitoylation. Expressed throughout cytoplasm, concentrating at the perinuclear region. Colocalizes with KCNB1 at the cell membrane (By similarity). Colocalizes with PLCL1 at the cell membrane (By similarity). .

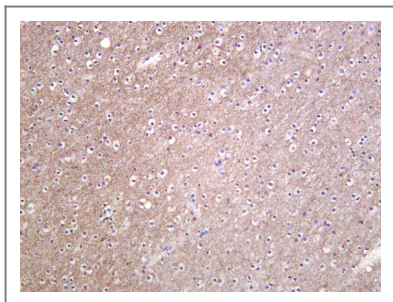
Tissue specificity Neurons of the neocortex, hippocampus, piriform cortex, anterior thalamic nuclei, pontine nuclei, and granule cells of the cerebellum.

Function Alternative products:Isoforms differ by the usage of two alternative homologous exons (5a and 5b) which encode for positions 56 to 94 and differ only in 9 positions out of 39,Function:t-SNARE involved in the molecular regulation of neurotransmitter release. May play an important role in the synaptic function of specific neuronal systems. Associates with proteins involved in vesicle docking and membrane fusion. Regulates plasma membrane recycling through its interaction with CENPF.,miscellaneous:When cloned and expressed in Eschericia coli, where protein palmitoylation does not occur, Cys-85, Cys-88, Cys-90 and Cys-92 in the protein sequence readily form an iron-sulfur cluster instead.,PTM:Palmitoylated. Cys-85 appears to be the main site, and palmitoylation is required for membrane association.,similarity:Belongs to the SNAP-25 family.,similarity:Contains 2 t-SNARE coiled-coil homology domains.,subcellular location:Membrane association requires palmitoylation. Expressed throughout cytoplasm, concentrating at the perinuclear region.,subunit:Part of the SNARE core complex containing SNAP25, VAMP2 and STX1A. This complex binds CPLX1. Interacts with CENPF, TRIM9, RIMS1, SNAP25BP, OTOF and HGS. Binds STXBP6. Found in a ternary complex with STX1A and VAMP8. Found in a complex containing SYT1, SV2B and syntaxin-1.,tissue specificity:Neurons of the neocortex, hippocampus, piriform cortex, anterior thalamic nuclei, pontine nuclei, and granule cells of the cerebellum.,

| Validation Data



Various whole cell lysates were separated by 4-20% SDS-PAGE, and the membrane was blotted with anti-SNAP 25 (PT1199R) antibody. The HRP-conjugated Goat anti-Rabbit IgG (H + L) antibody was used to detect the antibody. Lane 1: Rat brain Lane 2: Mouse brain Lane 3: SH-SY5Y Predicted band size: 23kDa Observed band size: 25kDa



Human brain was stained with anti-SNAP 25 (PT1199R) Rabbit antibody

Contact information

Orders: order@immunoway.com
 Support: tech@immunoway.com
 Telephone: 877-594-3616 (Toll Free), 408-747-0185
 Website: <http://www.immunoway.com>
 Address: 2200 Ringwood Ave San Jose, CA 95131 USA



Please scan the QR code to access additional product information:
SNAP 25 (PT1199R)
PT™ Rabbit mAb

For Research Use Only. Not for Use in Diagnostic Procedures.

[Antibody](#) | [ELISA Kits](#) | [Protein](#) | [Reagents](#)