

# PAK $\gamma$ (PT1029R) PT™ Rabbit mAb

CatalogNo: YM8818 **Recombinant** 

## Key Features

### Host Species

- Rabbit

### Reactivity

- Human, Mouse, Rat

### Applications

- WB, IHC, IF, ELISA

### MW

- 58kD (Calculated)
- 58kD (Observed)

### Isotype

- IgG, Kappa

## Storage

**Storage\*** -15°C to -25°C/1 year (Do not lower than -25°C)**Formulation** PBS, 50% glycerol, 0.05% Proclin 300, 0.05% BSA

## Recommended Dilution Ratios

**IHC 1:200-1:1000****WB 1:2000-1:10000****IF 1:200-1:1000****ELISA 1:5000-1:20000**

## Basic Information

**Clonality** Monoclonal**Clone Number** PT1029R

## Immunogen Information

**Specificity** Endogenous

## Target Information

**Gene name** PAK2

**Protein Name** Serine/threonine-protein kinase PAK 2

| Organism | Gene ID                  | UniProt ID               |
|----------|--------------------------|--------------------------|
| Human    | <a href="#">5062</a> ;   | <a href="#">Q13177</a> ; |
| Mouse    | <a href="#">224105</a> ; | <a href="#">Q8CIN4</a> ; |
| Rat      | <a href="#">29432</a> ;  | <a href="#">Q64303</a> ; |

**Cellular Localization**

[Serine/threonine-protein kinase PAK 2]: Cytoplasm. MYO18A mediates the cellular distribution of the PAK2-ARHGEF7-GIT1 complex to the inner surface of the cell membrane.; [PAK-2p34]: Nucleus. Cytoplasm, perinuclear region. Membrane; Lipid-anchor. Interaction with ARHGAP10 probably changes PAK-2p34 location to cytoplasmic perinuclear region. Myristoylation changes PAK-2p34 location to the membrane.

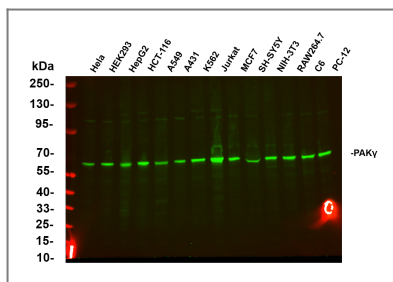
**Tissue specificity** Ubiquitously expressed. Higher levels seen in skeletal muscle, ovary, thymus and spleen.

**Function**

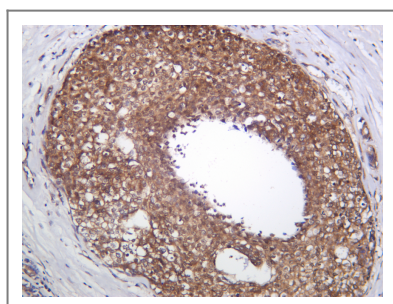
Catalytic activity:ATP + a protein = ADP + a phosphoprotein.,enzyme regulation:Activated by binding small G proteins. Binding of GTP-bound CDC42 or RAC1 to the autoregulatory region releases monomers from the autoinhibited dimer, enables phosphorylation of Thr-402 and allows the kinase domain to adopt an active structure (By similarity). Following caspase cleavage, autophosphorylated PAK-2p34 is constitutively active.,Function:The activated kinase acts on a variety of targets. Phosphorylates ribosomal protein S6, histone H4 and myelin basic protein. Full length PAK 2 stimulates cell survival and cell growth. The process is, at least in part, mediated by phosphorylation and inhibition of pro-apoptotic BAD. Caspase-activated PAK-2p34 is involved in cell death response, probably involving the JNK signaling pathway. Cleaved PAK-2p34 seems to have a higher activity than the CDC42-activated form.,PTM:During apoptosis proteolytically cleaved by caspase-3 or caspase-3-like proteases to yield active PAK-2p34.,PTM:Full length PAK 2 is autophosphorylated when activated by CDC42/p21. Following cleavage, both peptides, PAK-2p27 and PAK-2p34, become highly autophosphorylated, with PAK-2p27 being phosphorylated on serine and PAK-2p34 on threonine residues, respectively. Autophosphorylation of PAK-2p27 can occur in the absence of any effectors and is dependent on phosphorylation of Thr-402, because PAK-2p27 is acting as an exogenous substrate.,PTM:PAK-2p34 is myristoylated.,PTM:Ubiquitinated, leading to its proteosomal degradation.,similarity:Belongs to the protein kinase superfamily.,similarity:Belongs to the protein kinase superfamily. STE Ser/Thr protein kinase family. STE20 subfamily.,similarity:Contains 1 CRIB domain.,similarity:Contains 1 protein kinase domain.,subcellular location:Interaction with ARHGAP10 probably changes PAK-2p34 location to cytoplasmic perinuclear region. Myristoylation changes PAK-2p34 location to the membrane.,subunit:Interacts tightly with GTP-bound but not GDP-bound CDC42/p21 and RAC1. Interacts with SH3MD4. Interacts with and activated by HIV-1 Nef. PAK-2p34 interacts with ARHGAP10.,tissue specificity:Ubiquitously expressed. Higher levels seen in skeletal muscle, ovary, thymus and spleen.,

---

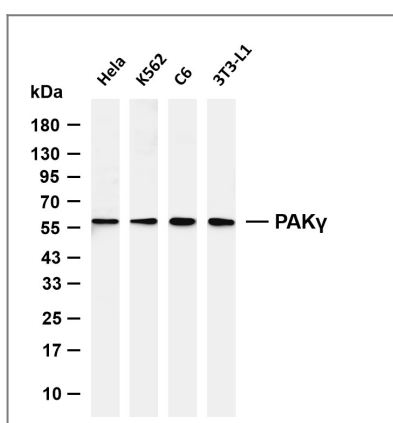
## Validation Data



Various whole cell lysates were separated by 4-20% SDS-PAGE, and the primary antibody was used at 4°C, over night with a 1:5000 dilution . The Dylight 800-conjugated Goat anti-Rabbit antibody(Cat:RS23920) was used to detect the antibody. Lane1: HeLa - Human cervical cancer Lane2: HEK293 - Human normal embryonic kidney Lane3: HepG2 - Human hepatocellular carcinoma Lane4: HCT-116 - Human colon cancer Lane5: A549 - Human lung adenocarcinoma Lane6: A431 - Human skin squamous cell carcinoma Lane7: K562 - Human chronic myeloid leukemia Lane8: Jurkat - Human acute T cell leukemia cells Lane9: MCF7 - Human breast cancer Lane10: SH-SY5Y - Human neuroblastoma cells Lane11: NIH-3T3 - NIH mouse fibroblasts Lane12: RAW264.7 - Mouse mononuclear macrophage leukemia cells Lane13: C6 - Rat glioma cells Lane14: PC-12 - Pheochromocytoma in rats Predicted band size: 58kDa Observed band size: 58kDa



Human breast carcinoma was stained with anti-PAKγ (PT1029R) Rabbit antibody



Various whole cell lysates were separated by 4-20% SDS-PAGE, and the membrane was blotted with anti-PAKγ (PT1029R) antibody. The HRP-conjugated Goat anti-Rabbit IgG (H + L) antibody was used to detect the antibody. Lane 1: HeLa Lane 2: K562 Lane 3: C6 Lane 4: 3T3-L1 Predicted band size: 58kDa Observed band size: 58kDa

## Contact information

Orders: [order@immunoway.com](mailto:order@immunoway.com)  
 Support: [tech@immunoway.com](mailto:tech@immunoway.com)  
 Telephone: 877-594-3616 (Toll Free), 408-747-0185  
 Website: <http://www.immunoway.com>  
 Address: 2200 Ringwood Ave San Jose, CA 95131 USA



Please scan the QR code to access additional product information:  
**PAKγ (PT1029R)**  
**PT™ Rabbit mAb**